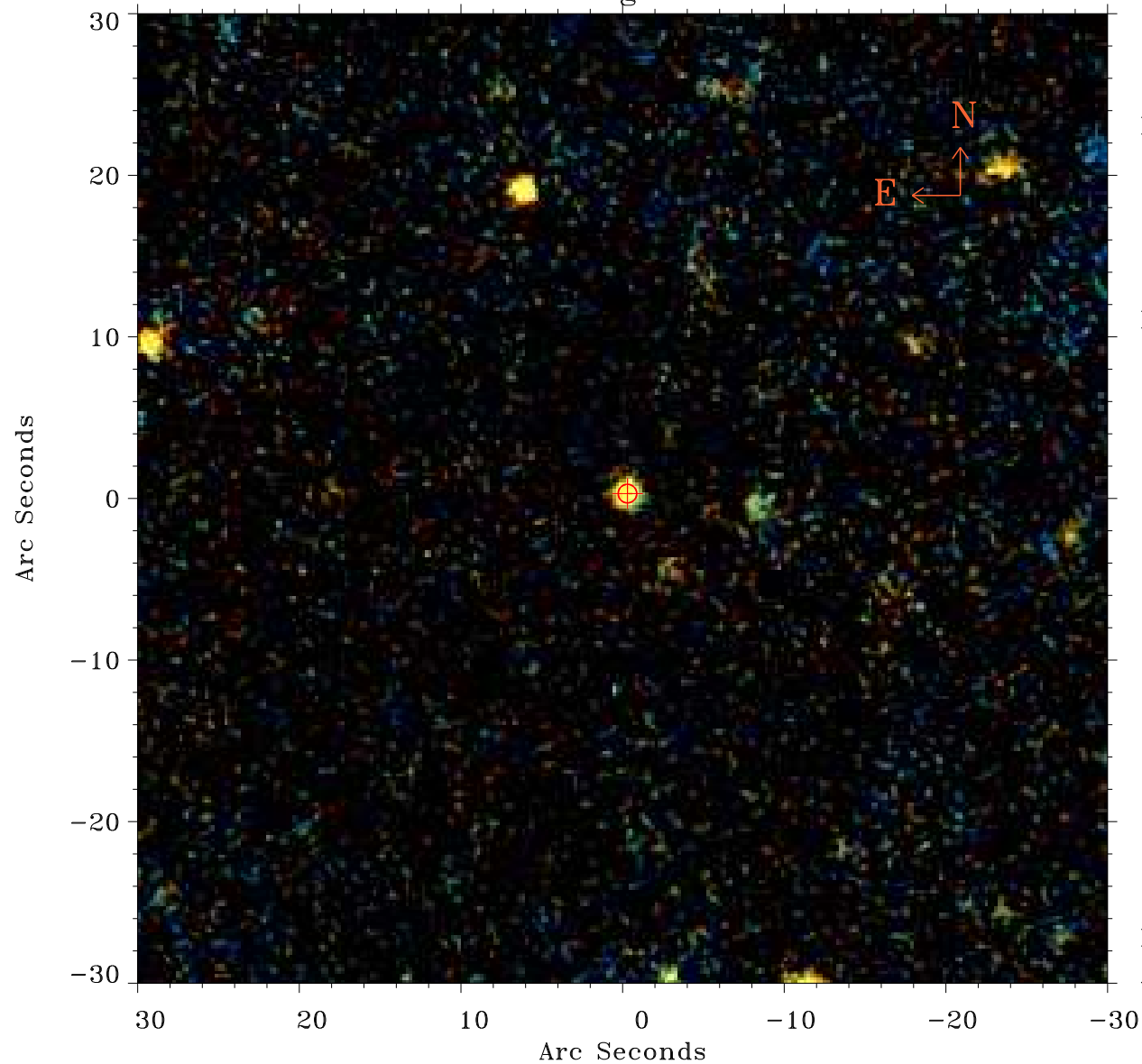


# EPIC source finding chart ACDS V10.0



Principal Investigator :

Dr Jiangtao Li

XMM target name :

NGC 550

OBS ID : 741300501

Source number : 3

X-ray coordinates :

$\alpha$  : 01 26 24.97

$\delta$  : +01 48 26.3

Center coordinates :

$\alpha$  : 01 26 24.98

$\delta$  : +01 48 26.2

Plate reference :

Origin : PanSTARRS-DR1

Color coding :

z band ●

(z+g)/2 ●

g band ●

Error:

R90 : 0.6 arcsec

XMM SSC

Apr 19 13:27:31 2019