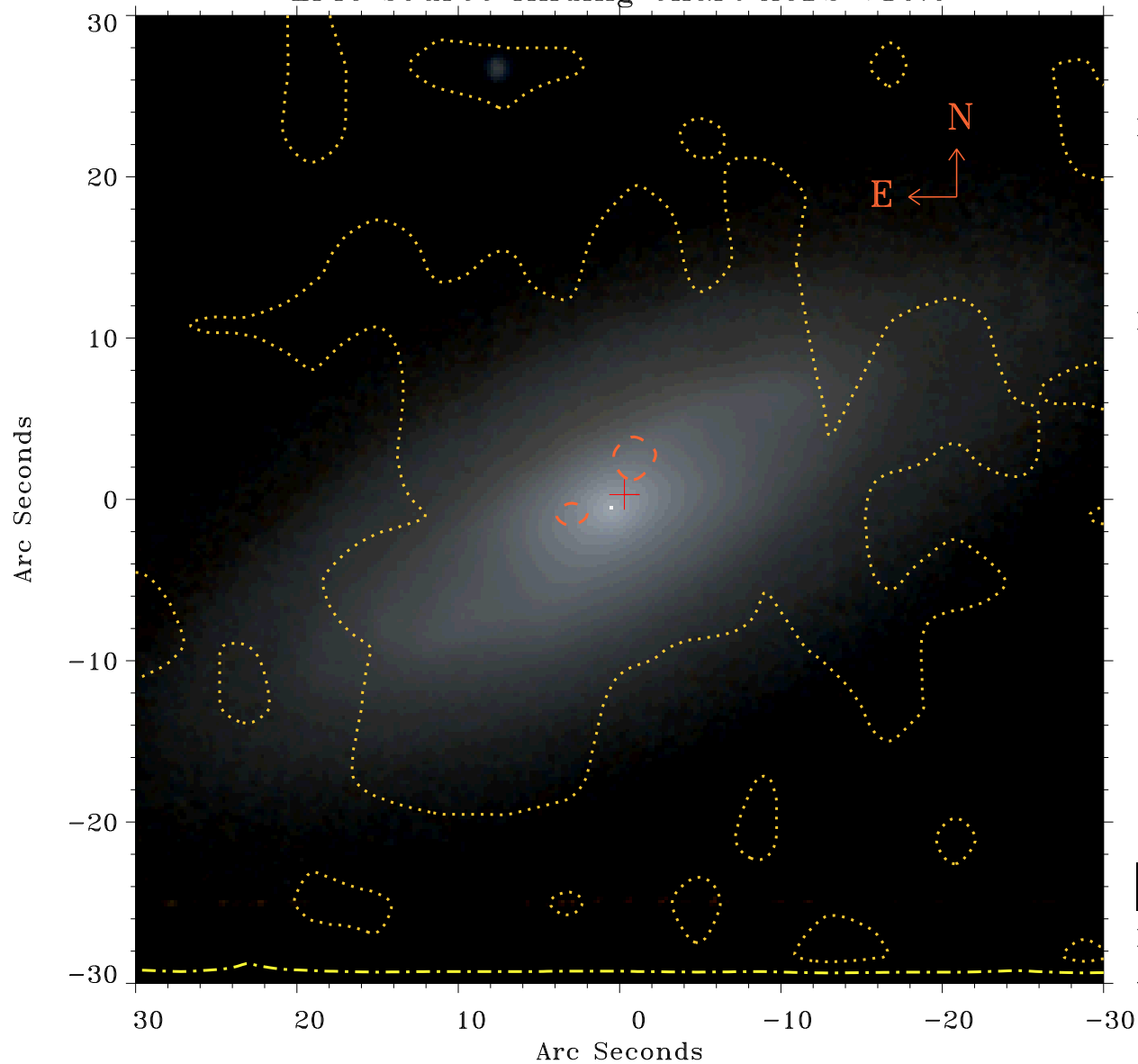


# EPIC source finding chart ACDS V10.0



Principal Investigator :

Dr Jiangtao Li

XMM target name :

NGC 550

OBS ID : 741300501

Source number : 12

X-ray coordinates :

$\alpha$  : 01 26 42.50

$\delta$  : +02 01 21.2

Center coordinates :

$\alpha$  : 01 26 42.51

$\delta$  : +02 01 21.1

Plate reference :

Origin : PanSTARRS-DR1

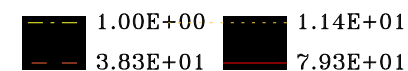
Color coding :

z band ●

(z+g)/2 ●

g band ●

Contour levels (counts) :



XMM SSC

Apr 19 13:41:22 2019