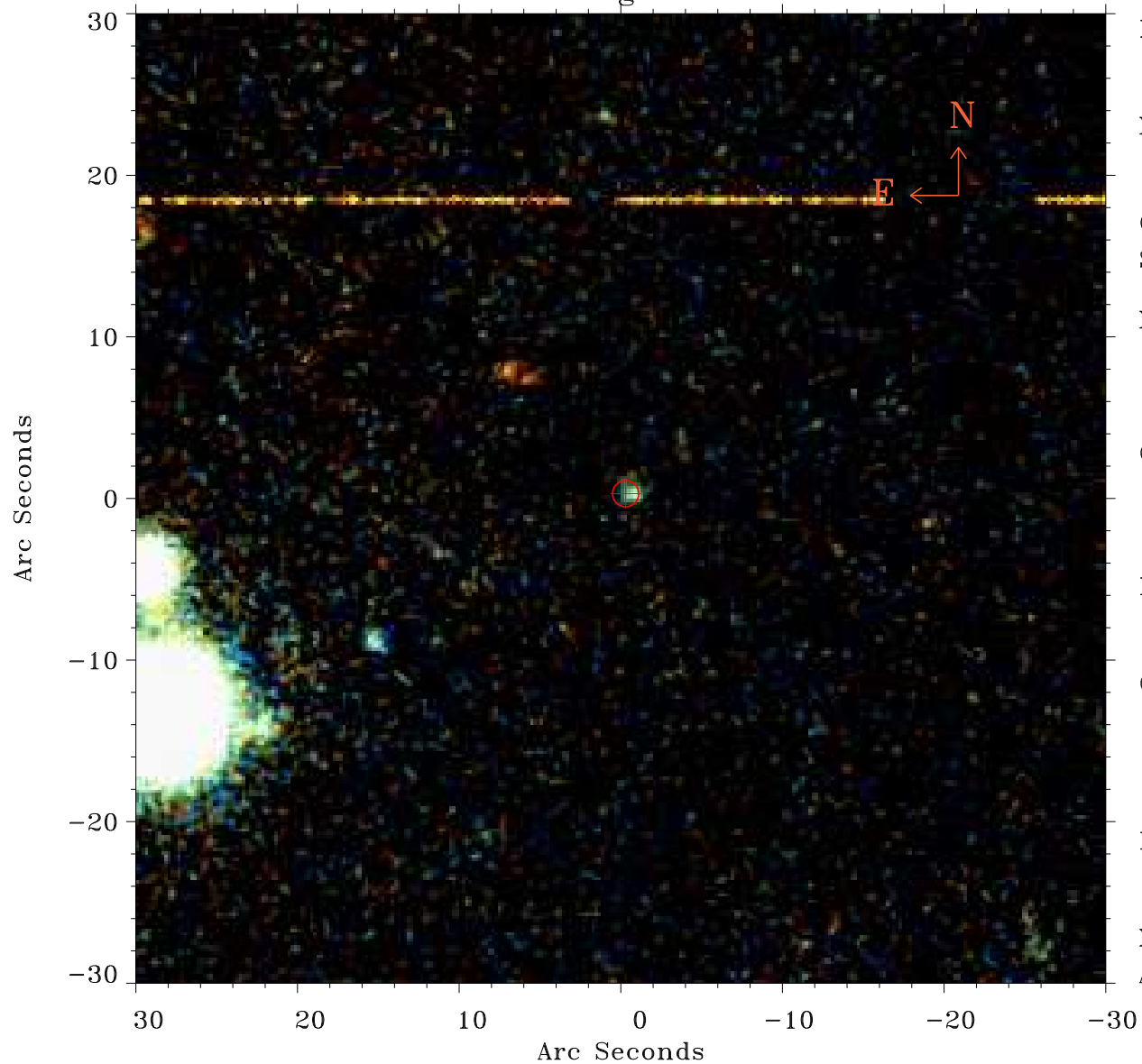


EPIC source finding chart ACDS V10.0



Principal Investigator :

Dr Jiangtao Li

XMM target name :

NGC 550

OBS ID : 741300501

Source number : 15

X-ray coordinates :

α : 01 26 54.93

δ : +01 58 38.2

Center coordinates :

α : 01 26 54.94

δ : +01 58 38.1

Plate reference :

Origin : PanSTARRS-DR1

Color coding :

z band ●

(z+g)/2 ●

g band ●

Error:

R90 : 0.8 arsec

XMM SSC

Apr 19 13:47:41 2019