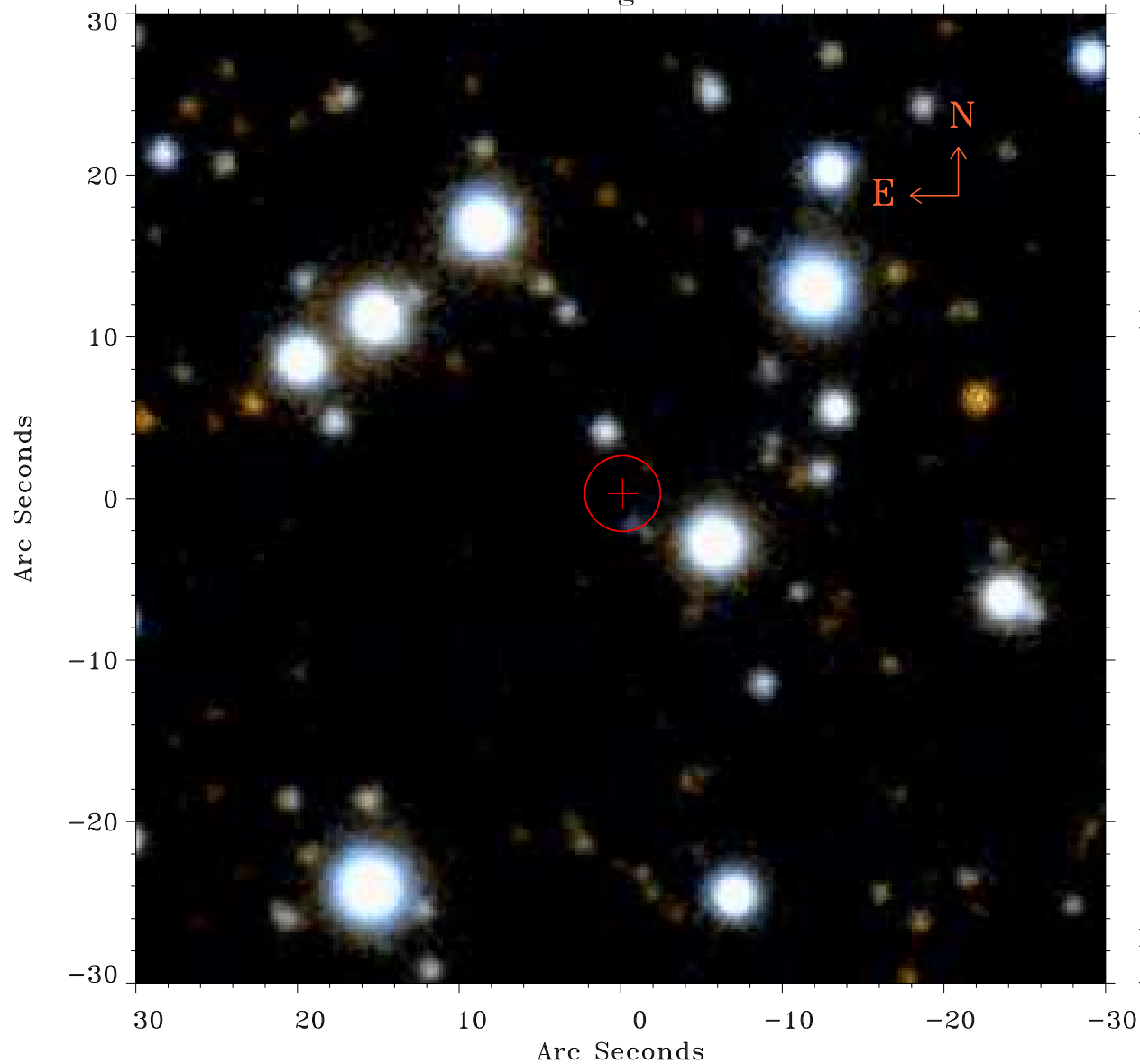


# EPIC source finding chart ACDS V10.0



Principal Investigator :

Dr K.D. Kuntz

XMM target name :

NPS 7

OBS ID : 741890701

Source number : 3

X-ray coordinates :

$\alpha$  : 18 17 00.37

$\delta$  : -00 22 46.6

Center coordinates :

$\alpha$  : 18 17 00.37

$\delta$  : -00 22 46.7

Plate reference :

Origin : PanSTARRS-DR1

Color coding :

z band ●

(z+g)/2 ●

g band ●

Error:

R90 : 2.3 arcsec

XMM SSC

Apr 29 10:27:21 2019