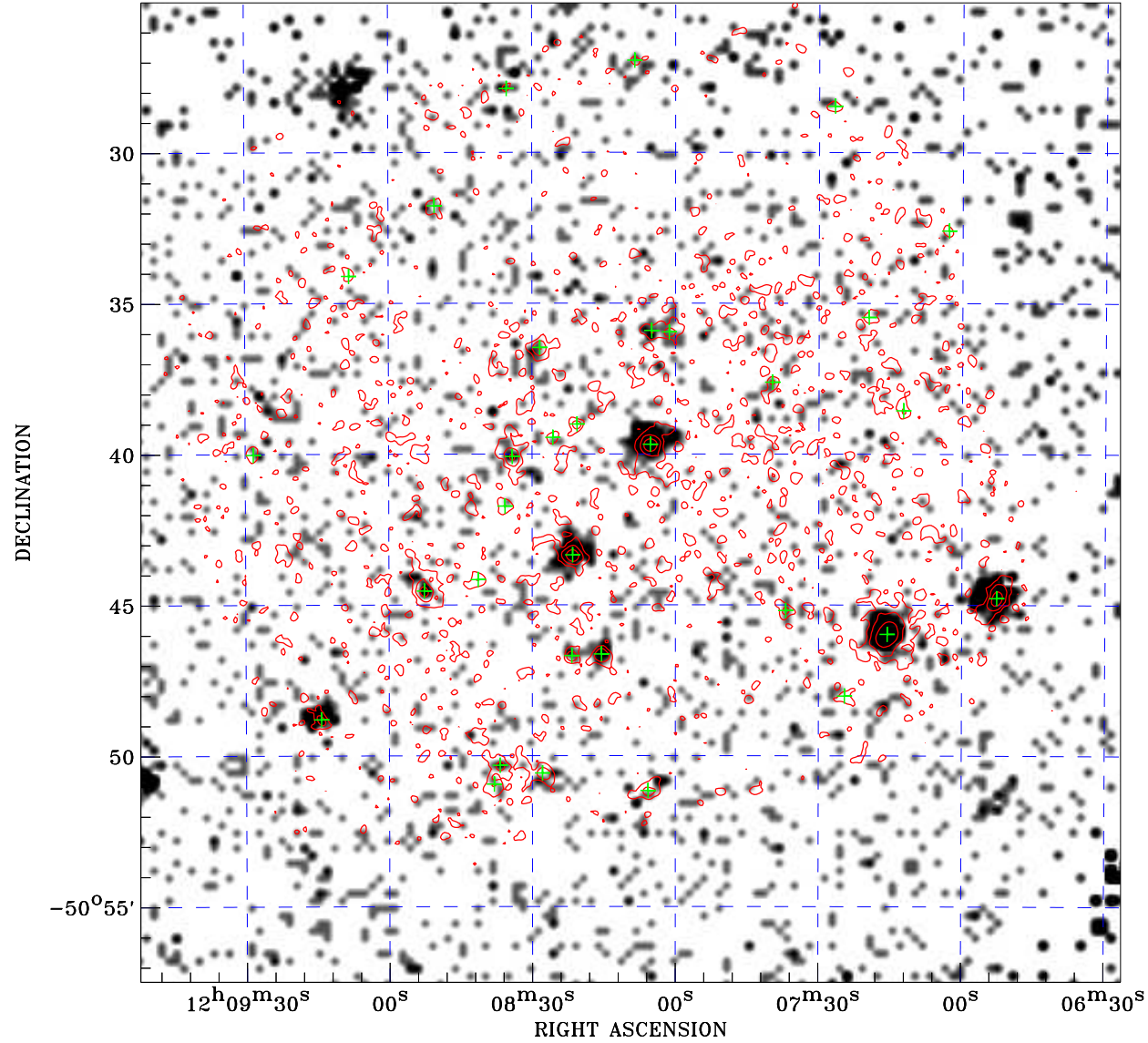


PDF XMM ROSAT image ACDS V10.0



ROSAT image gray scale (Log) :

$\langle 5.876\text{E-}05$ $\rangle 4.902\text{E-}04$

(counts s⁻¹)

⊙ Epic image contour
levels at 2, 7 and 30 σ

+ Detected Epic sources

Principal Investigator :
Dr Veronique Petit

XMM target name :
HD 105382

Observation ID :
0742340101

Epic image :
 α : 12 08 09.37
 δ : -50 41 16.9
Energy band : 0.2–12.0 keV
MOS1 : 8648 s
MOS2 : 8619 s
PN : 7041 s

Contour levels (counts) :
2 σ :5.200E-01 7 σ :1.286E+00
30 σ 4.809E+00

Nearest ROSAT image
from Epic image center :
Observation : 201497p
Instrument : PSPCB
 α : 12 08 40.60
 δ : -50 46 12.2

Other ROSAT images :
None

XMM SSC
May 2 14:45:38 2019