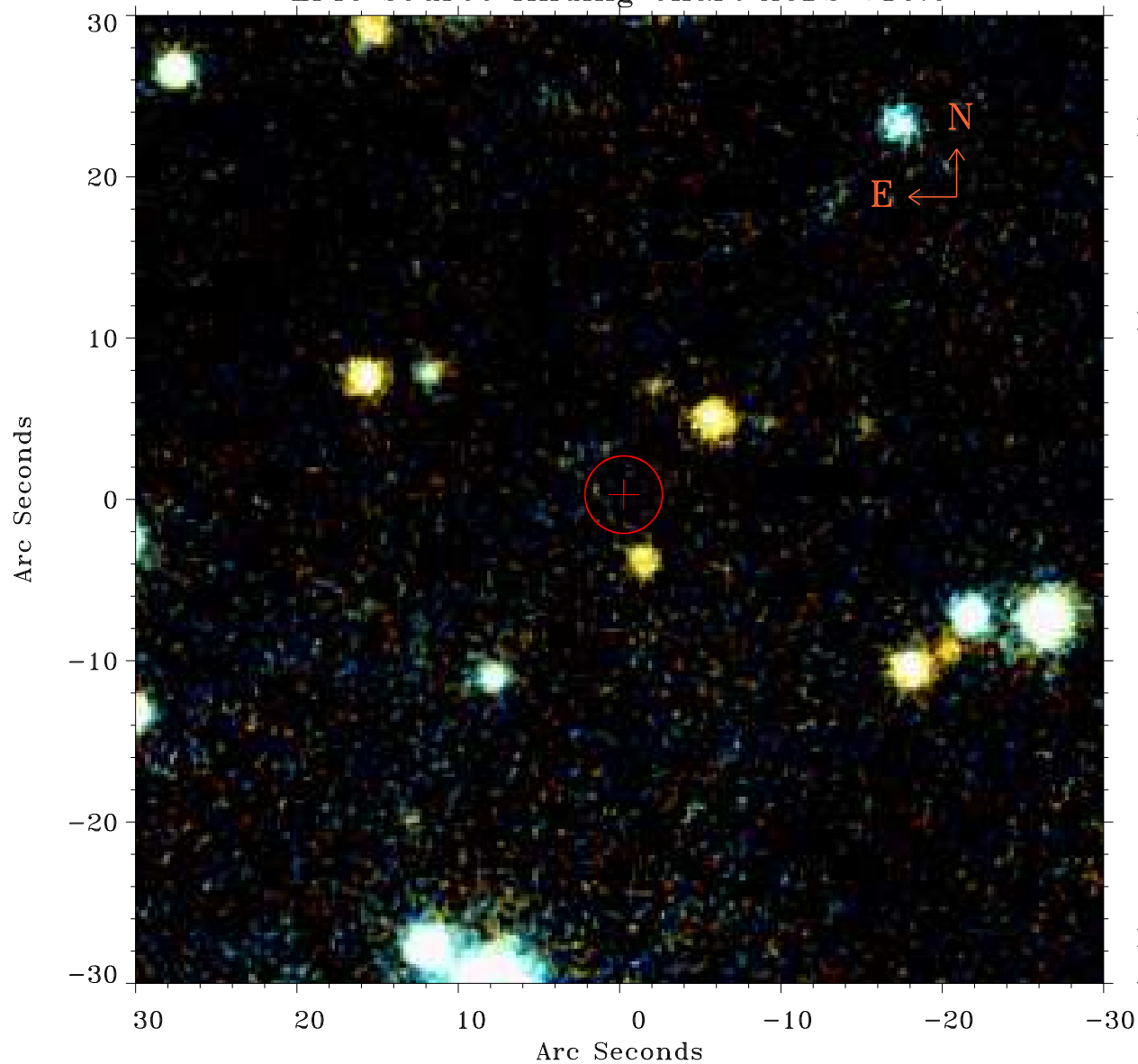


# EPIC source finding chart ACDS V10.0



Principal Investigator :

Dr Dominique Eckert

XMM target name :

RXC J1825 S

OBS ID : 744413801

Source number : 66

X-ray coordinates :

$\alpha$  : 18 25 44.30

$\delta$  : +30 05 40.8

Center coordinates :

$\alpha$  : 18 25 44.31

$\delta$  : +30 05 40.7

Plate reference :

Origin : PanSTARRS-DR1

Color coding :

z band ●

(z+g)/2 ●

g band ●

Error:

R90 : 2.4 arcsec

XMM SSC

Apr 20 23:26:43 2019