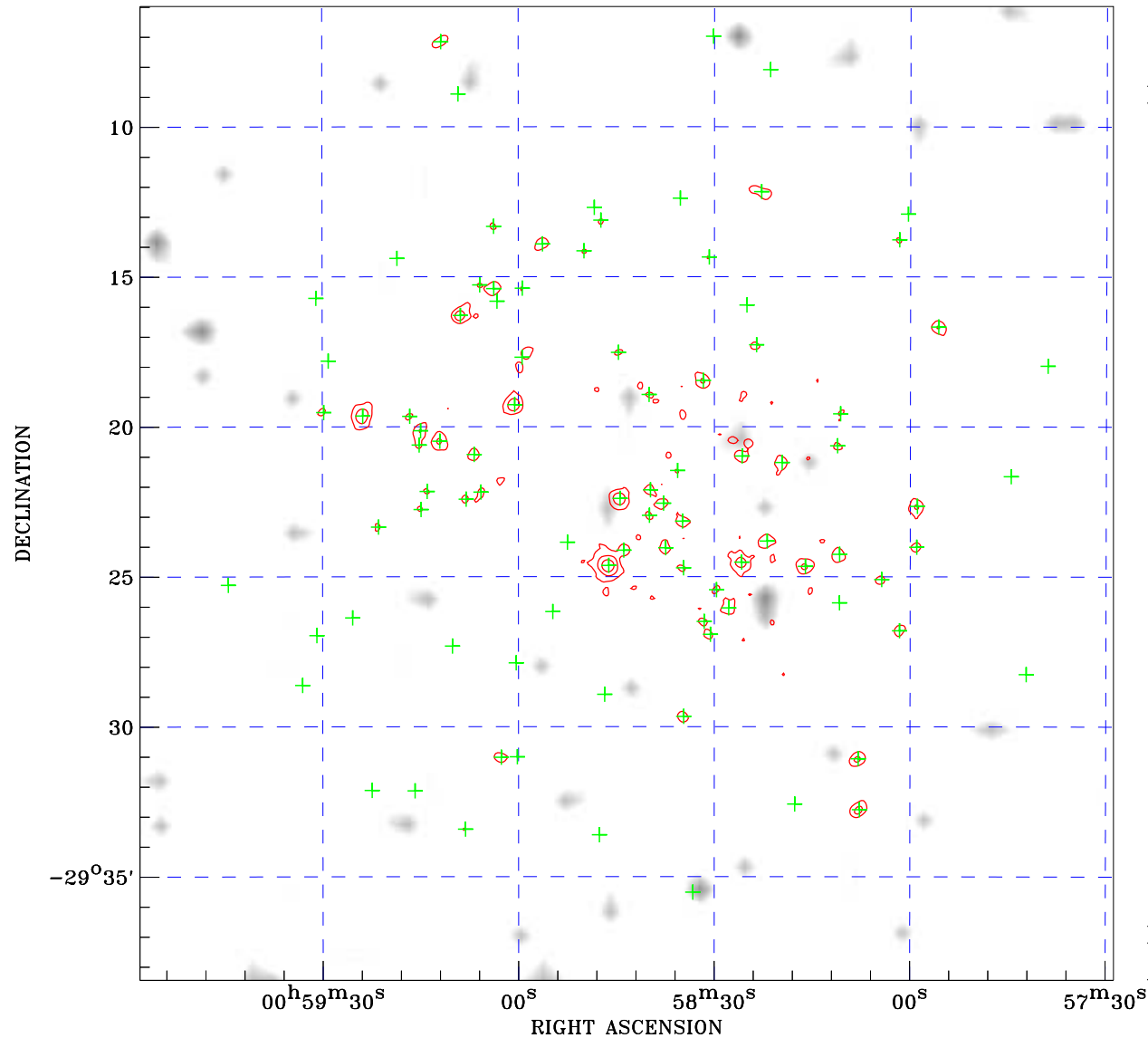



PDF XMM RASS image ACDS V10.0



RASS image gray scale (Log) :

 < 2.972E-03 > 2.742E-02
 (counts s⁻¹)

⊙ Epic image contour
 levels at 2, 7 and 30σ
 + Detected Epic sources

Principal Investigator :
 Dr Jan Robrade

XMM target name :
 HD 5737

Observation ID :
 0760390101

Epic image :
 α : 00 58 43.42
 δ : -29 22 13.6
 Energy band : 0.2–12.0 keV
 MOS1 : 31949 s
 MOS2 : 32466 s
 PN : 29445 s

Contour levels (counts) :
 2σ : 5.076E+00 7σ : 1.155E+01
 30σ : 4.131E+01

RASS image :
 Observation : 932203p
 Instrument : PSPCC
 α : 01 02 45.07
 δ : -28 16 30.4

XMM SSC
 Apr 21 21:33:12 2019