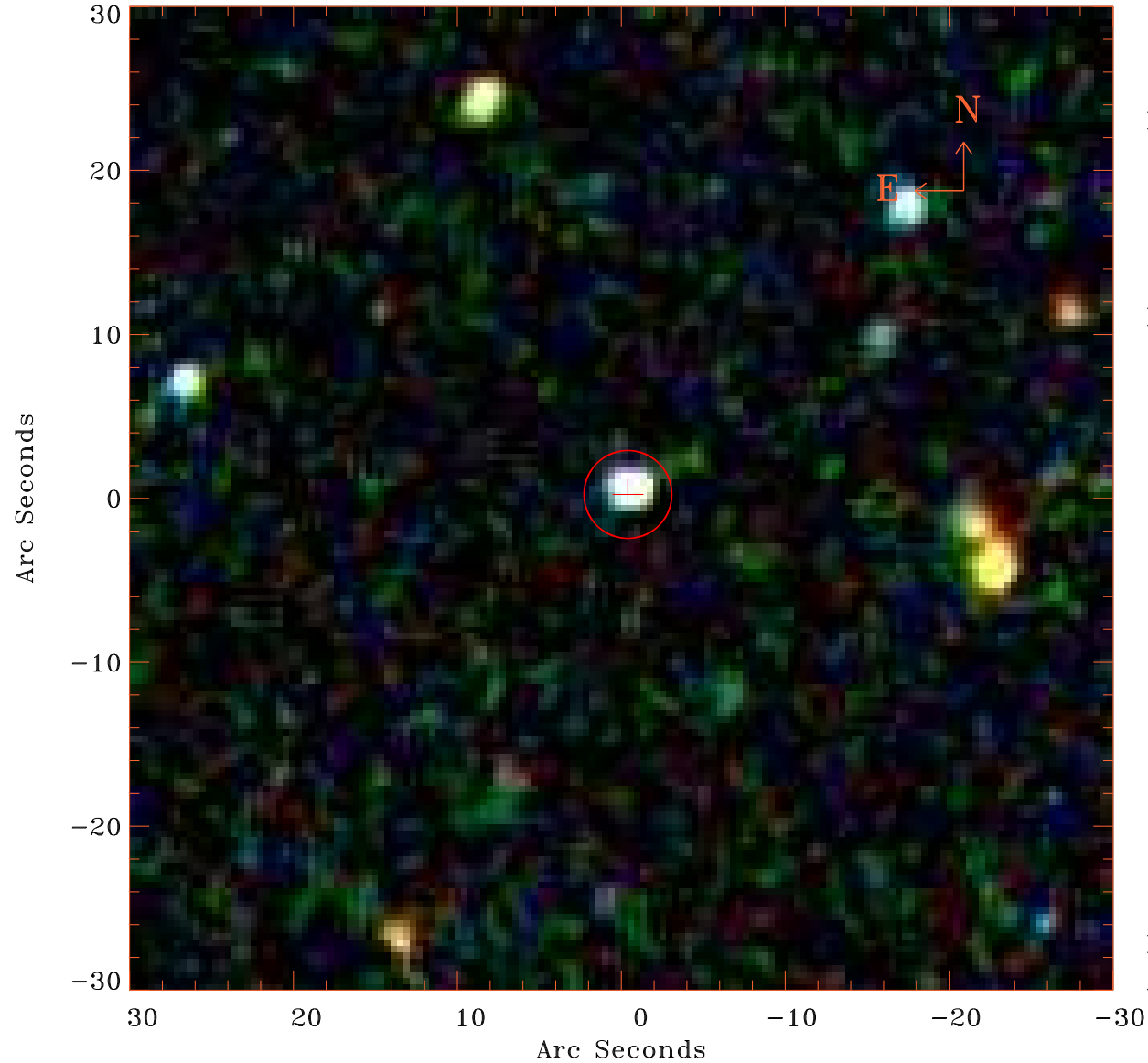


EPIC source finding chart V10.0



Principal Investigator :

Prof Martin Hardcastle

XMM target name :

SDSS141802.79+41493

OBS ID : 761290801

Source number : 25

X-ray coordinates :

α : 14 17 48.28

δ : +42 00 21.1

Center coordinates :

α : 14 17 48.28

δ : +42 00 21.2

Plate reference :

Origin : SDSS

Color coding :

i band ●

r band ●

g band ●

Error circle :

R_{90} (") : 2.7

XMM SSC

Apr 20 20:32:16 2019