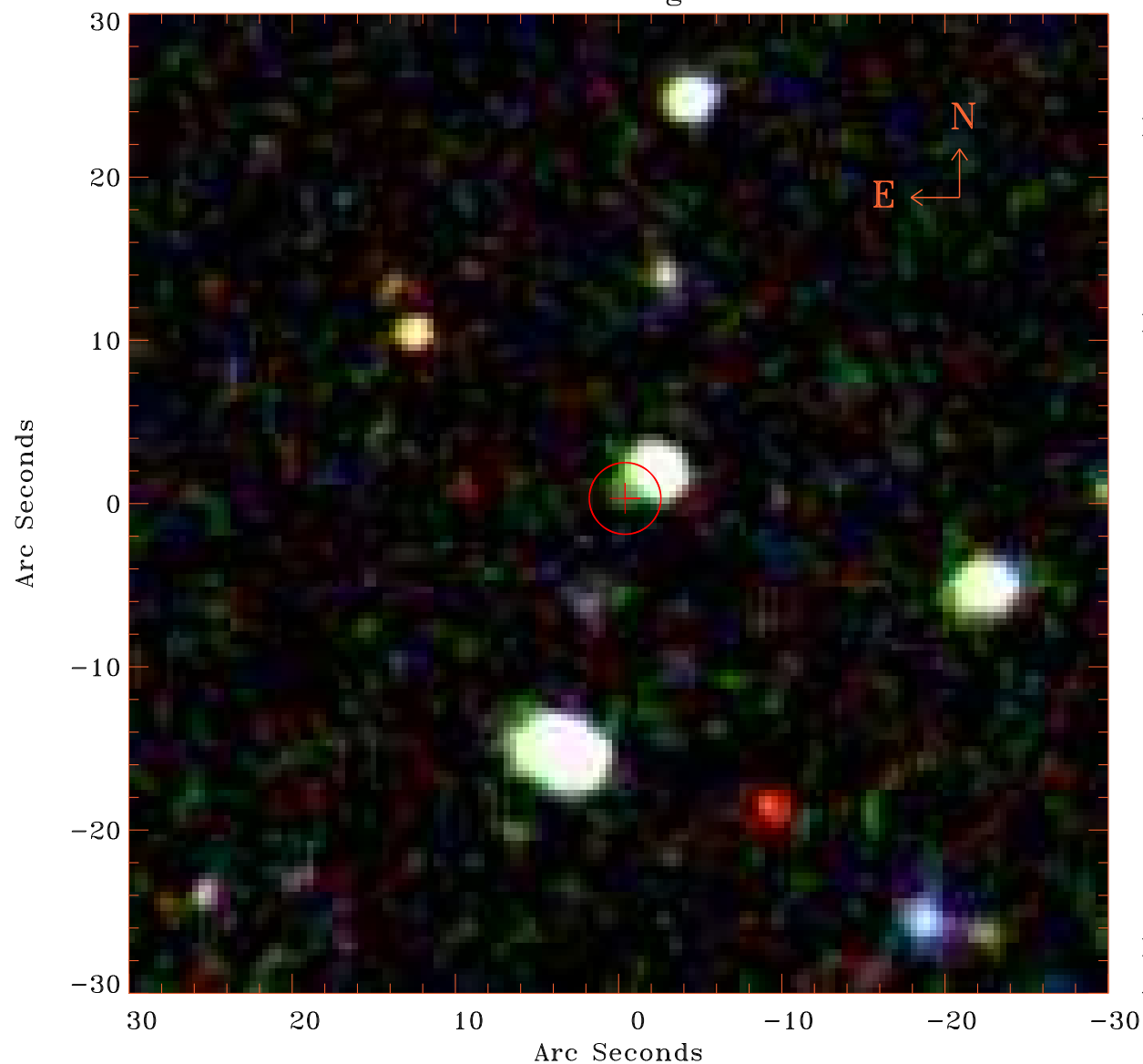


EPIC source finding chart V10.0



Principal Investigator :

Prof Martin Hardcastle

XMM target name :

SDSS141802.79+41493

OBS ID : 761290801

Source number : 36

X-ray coordinates :

α : 14 17 09.09

δ : +41 41 20.4

Center coordinates :

α : 14 17 09.09

δ : +41 41 20.5

Plate reference :

Origin : SDSS

Color coding :

i band ●

r band ●

g band ●

Error circle :

R_{90} (") : 2.2

XMM SSC

Apr 20 20:32:02 2019