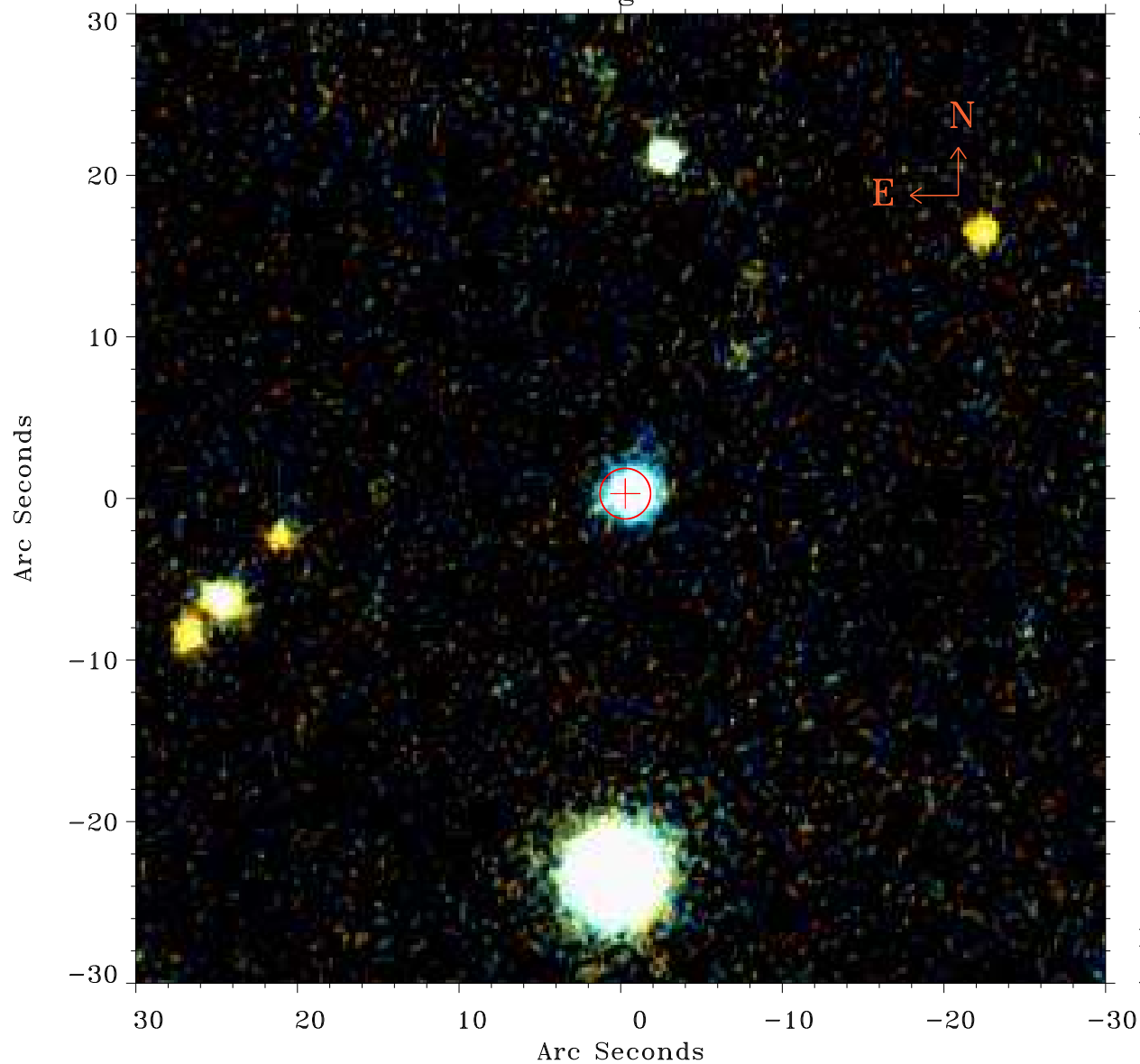


# EPIC source finding chart ACDS V10.0



Principal Investigator :

Prof Martin Hardcastle

XMM target name :

SDSS141802.79+41493

OBS ID : 761290801

Source number : 7

X-ray coordinates :

$\alpha$  : 14 17 00.61

$\delta$  : +41 52 19.0

Center coordinates :

$\alpha$  : 14 17 00.62

$\delta$  : +41 52 18.9

Plate reference :

Origin : PanSTARRS-DR1

Color coding :

z band ●

(z+g)/2 ●

g band ●

Error:

R90 : 1.6 arcsec

XMM SSC

Apr 20 20:34:04 2019