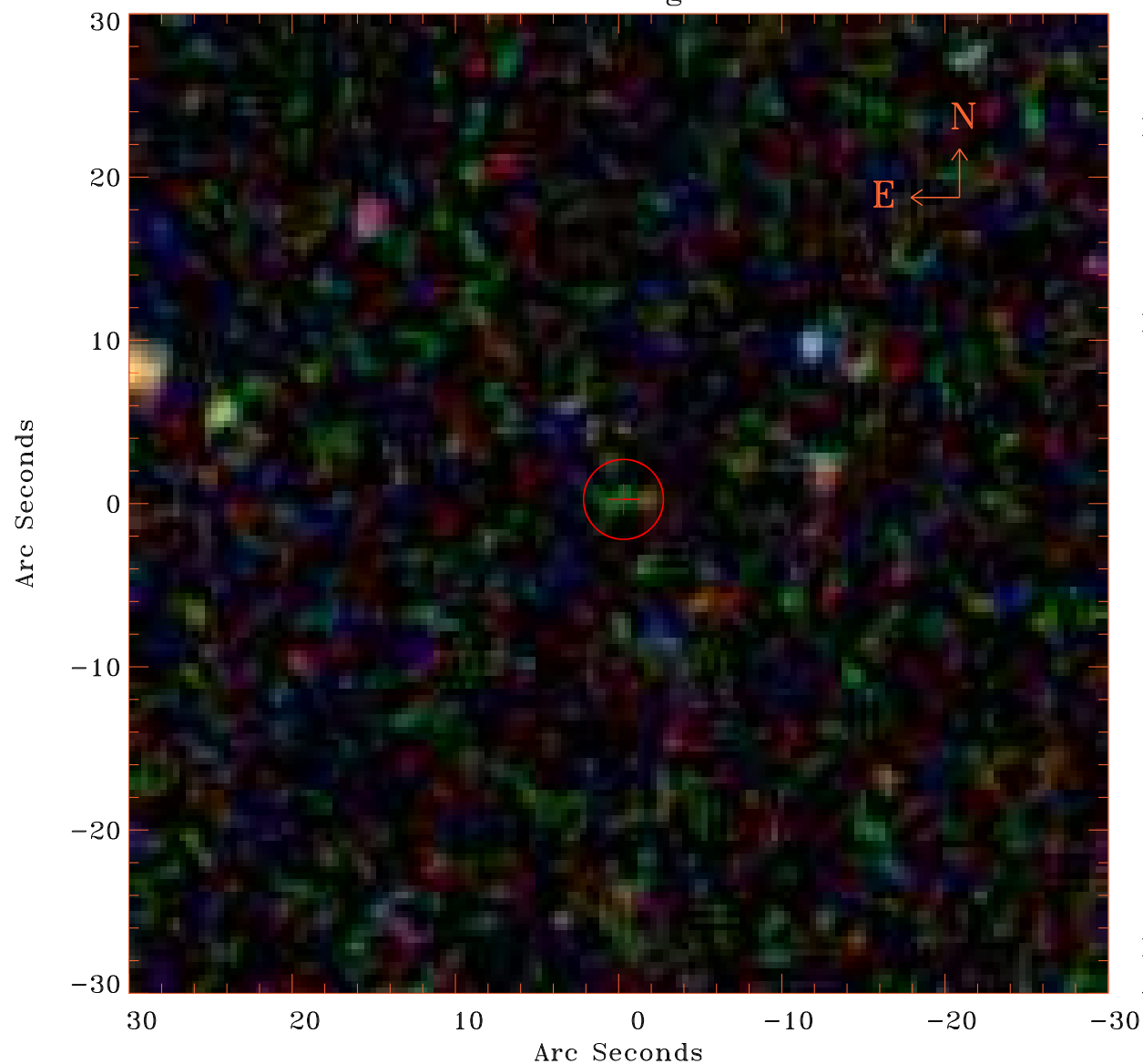


EPIC source finding chart V10.0



Principal Investigator :

Prof Martin Hardcastle

XMM target name :

SDSS141802.79+41493

OBS ID : 761290801

Source number : 26

X-ray coordinates :

α : 14 18 22.17

δ : +41 41 24.7

Center coordinates :

α : 14 18 22.17

δ : +41 41 24.8

Plate reference :

Origin : SDSS

Color coding :

i band ●

r band ●

g band ●

Error circle :

R_{90} (") : 2.4

XMM SSC

Apr 20 20:32:29 2019