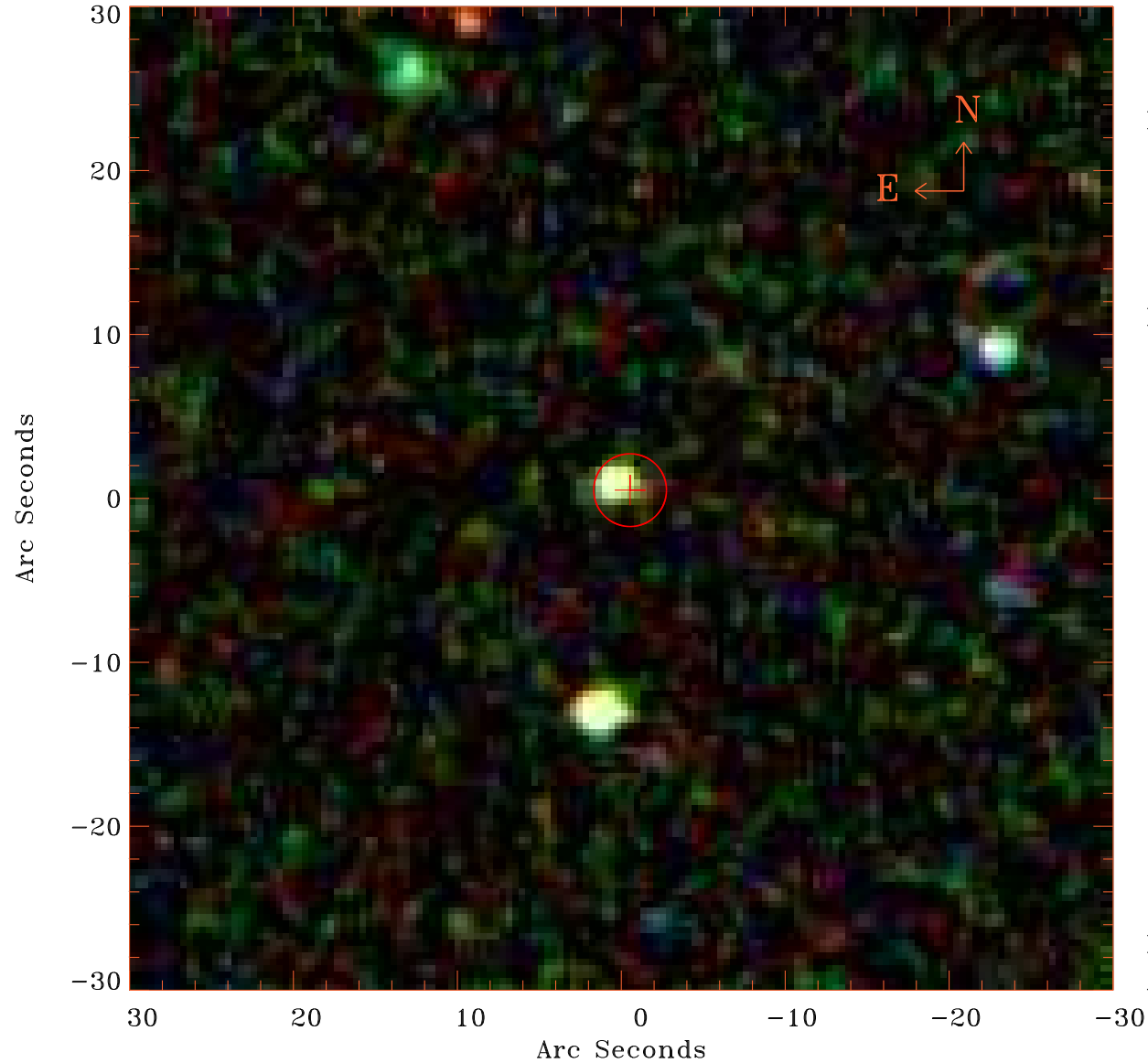


EPIC source finding chart V10.0



Principal Investigator :
Prof Martin Hardcastle

XMM target name :
SDSS141802.79+41493

OBS ID : 761290801
Source number : 31

X-ray coordinates :
 α : 14 17 26.94
 δ : +41 50 49.6

Center coordinates :
 α : 14 17 26.96
 δ : +41 50 49.5

Plate reference :
Origin : SDSS

Color coding :
i band ●
r band ●
g band ●

Error circle :
 R_{90} (") : 2.2

XMM SSC
Apr 20 20:32:08 2019