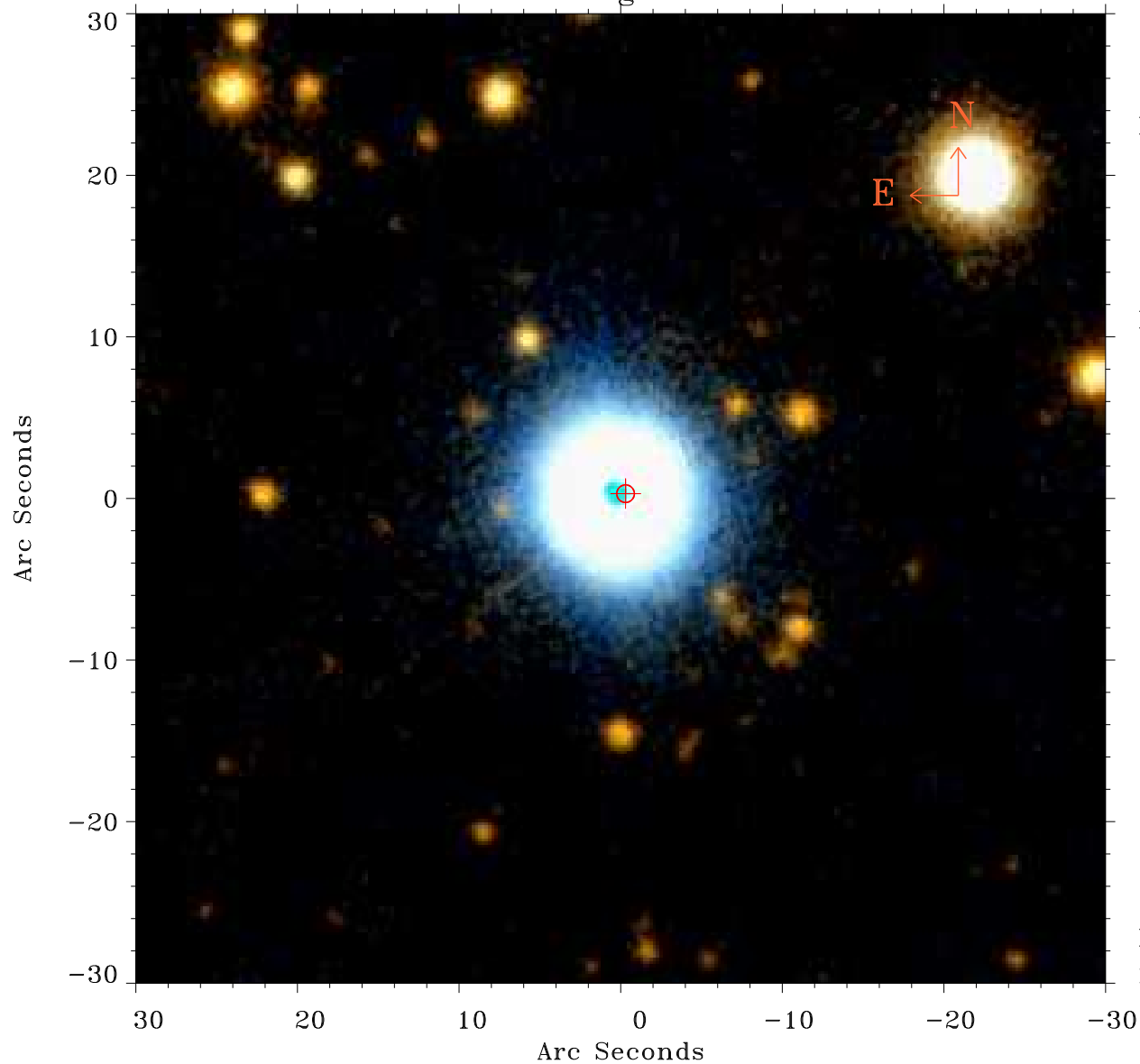


# EPIC source finding chart ACDS V10.0



Principal Investigator :

Mr Constantin Cazorla

XMM target name :

Cyg OB2 5

OBS ID : 780040101

Source number : 7

X-ray coordinates :

$\alpha$  : 20 31 51.29

$\delta$  : +41 23 23.3

Center coordinates :

$\alpha$  : 20 31 51.30

$\delta$  : +41 23 23.2

Plate reference :

Origin : PanSTARRS-DR1

Color coding :

z band ●

(z+g)/2 ●

g band ●

Error:

R90 : 0.5 arsec

XMM SSC

May 4 01:39:24 2019