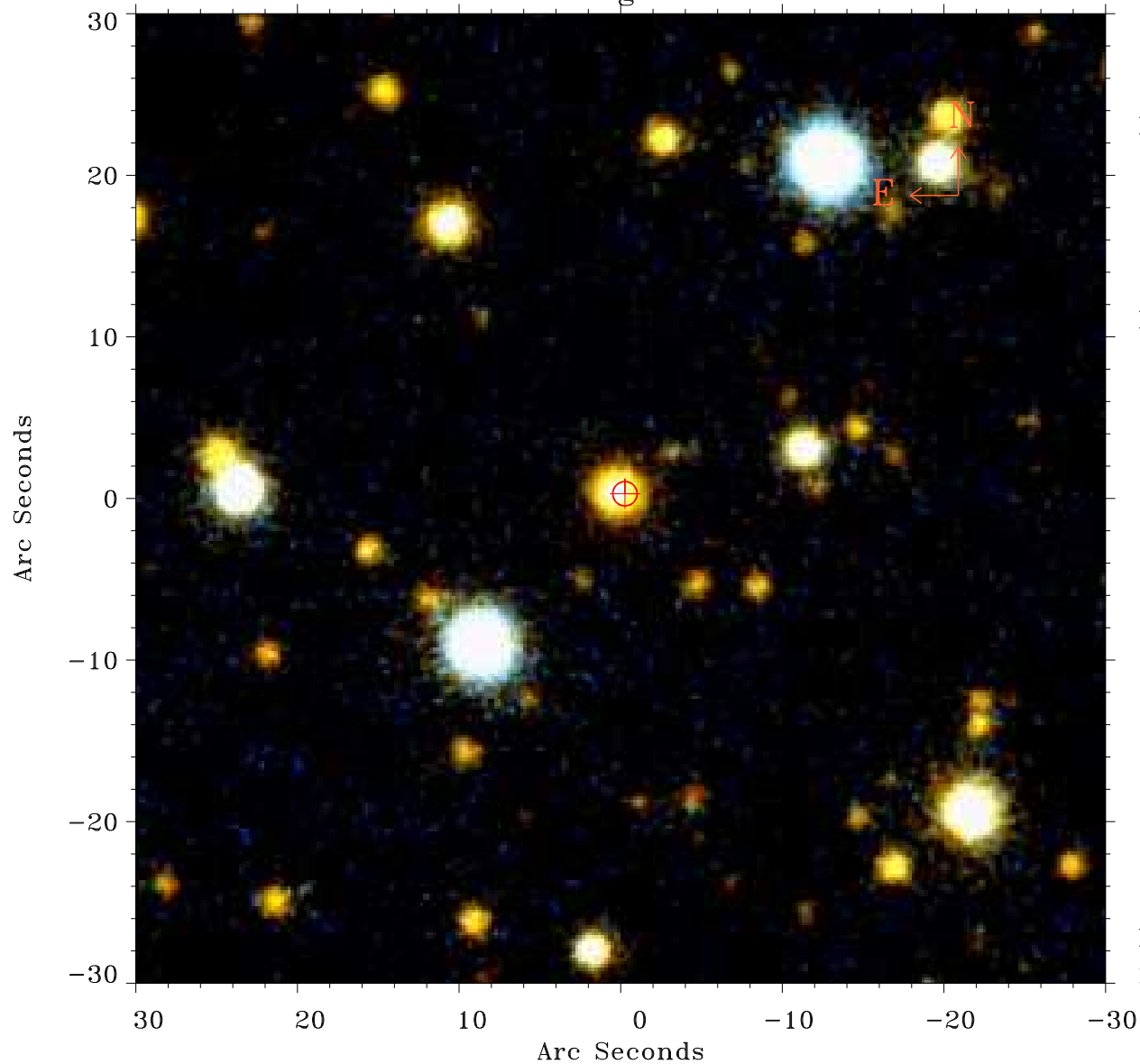


EPIC source finding chart ACDS V10.0



Principal Investigator :

Mr Constantin Cazorla

XMM target name :

Cyg OB2 5

OBS ID : 780040101

Source number : 16

X-ray coordinates :

α : 20 31 54.57

δ : +41 21 51.0

Center coordinates :

α : 20 31 54.58

δ : +41 21 50.9

Plate reference :

Origin : PanSTARRS-DR1

Color coding :

z band ●

(z+g)/2 ●

g band ●

Error:

R90 : 0.7 arsec

XMM SSC

May 4 01:39:29 2019