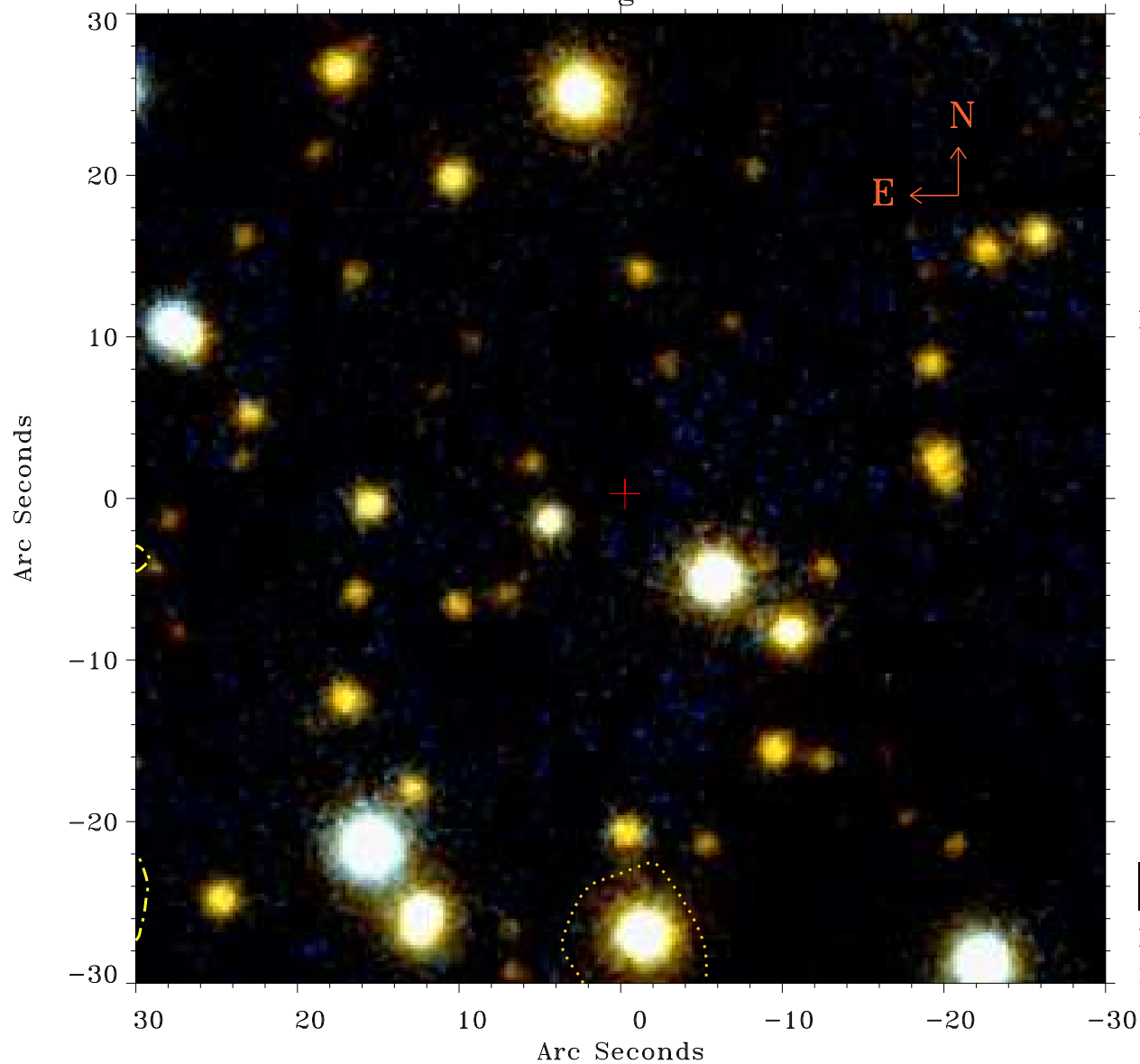


# EPIC source finding chart ACDS V10.0



Principal Investigator :

Mr Constantin Cazorla

XMM target name :

Cyg OB2 5

OBS ID : 780040101

Source number : 21

X-ray coordinates :

$\alpha$  : 20 32 24.81

$\delta$  : +41 16 56.9

Center coordinates :

$\alpha$  : 20 32 24.82

$\delta$  : +41 16 56.8

Plate reference :

Origin : PanSTARRS-DR1

Color coding :

z band ●

(z+g)/2 ●

g band ●

Contour levels (counts) :



XMM SSC

May 4 01:42:26 2019