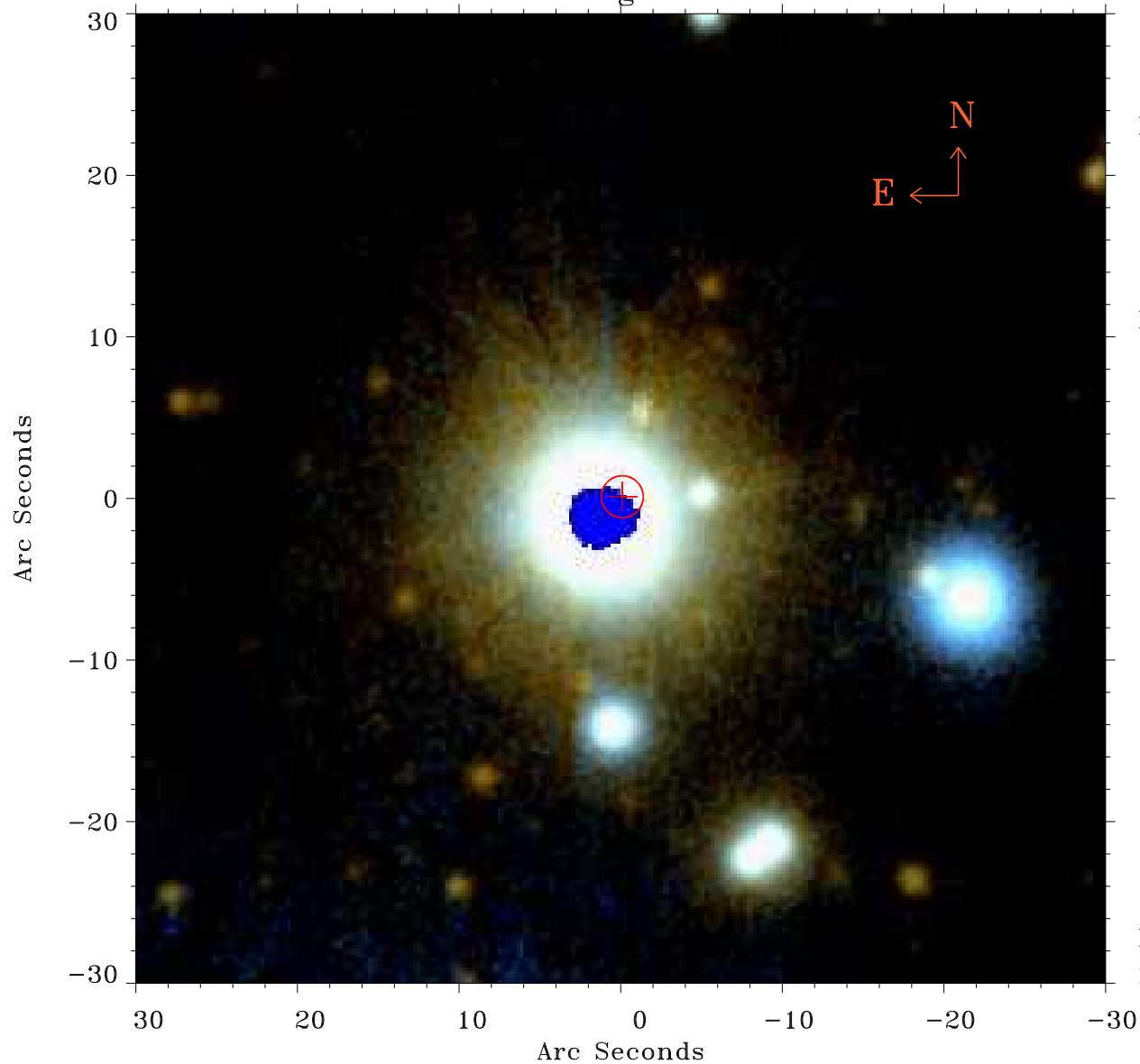


# EPIC source finding chart ACDS V10.0



Principal Investigator :

Mr Constantin Cazorla

XMM target name :

Cyg OB2 5

OBS ID : 780040101

Source number : 28

X-ray coordinates :

$\alpha$  : 20 31 45.30

$\delta$  : +41 18 27.8

Center coordinates :

$\alpha$  : 20 31 45.29

$\delta$  : +41 18 27.9

Plate reference :

Origin : PanSTARRS-DR1

Color coding :

z band ●

(z+g)/2 ●

g band ●

Error:

R90 : 1.3 arsec

XMM SSC

May 4 01:38:46 2019