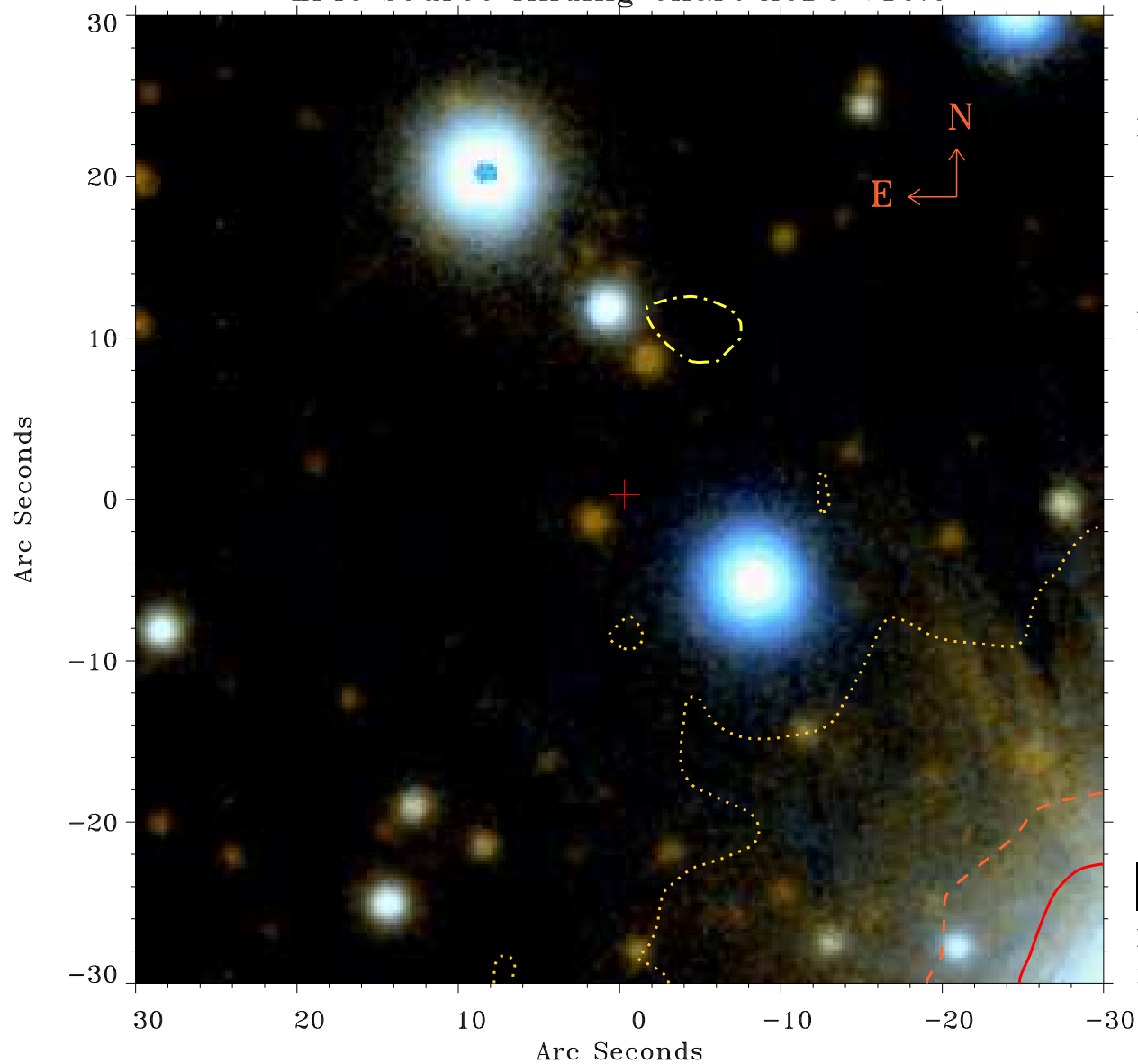


EPIC source finding chart ACDS V10.0



Principal Investigator :

Mr Constantin Cazorla

XMM target name :

Cyg OB2 5

OBS ID : 780040101

Source number : 31

X-ray coordinates :

α : 20 32 25.74

δ : +41 18 53.7

Center coordinates :

α : 20 32 25.75

δ : +41 18 53.6

Plate reference :

Origin : PanSTARRS-DR1

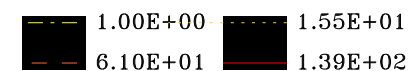
Color coding :

z band ●

(z+g)/2 ●

g band ●

Contour levels (counts) :



XMM SSC

May 4 01:42:35 2019