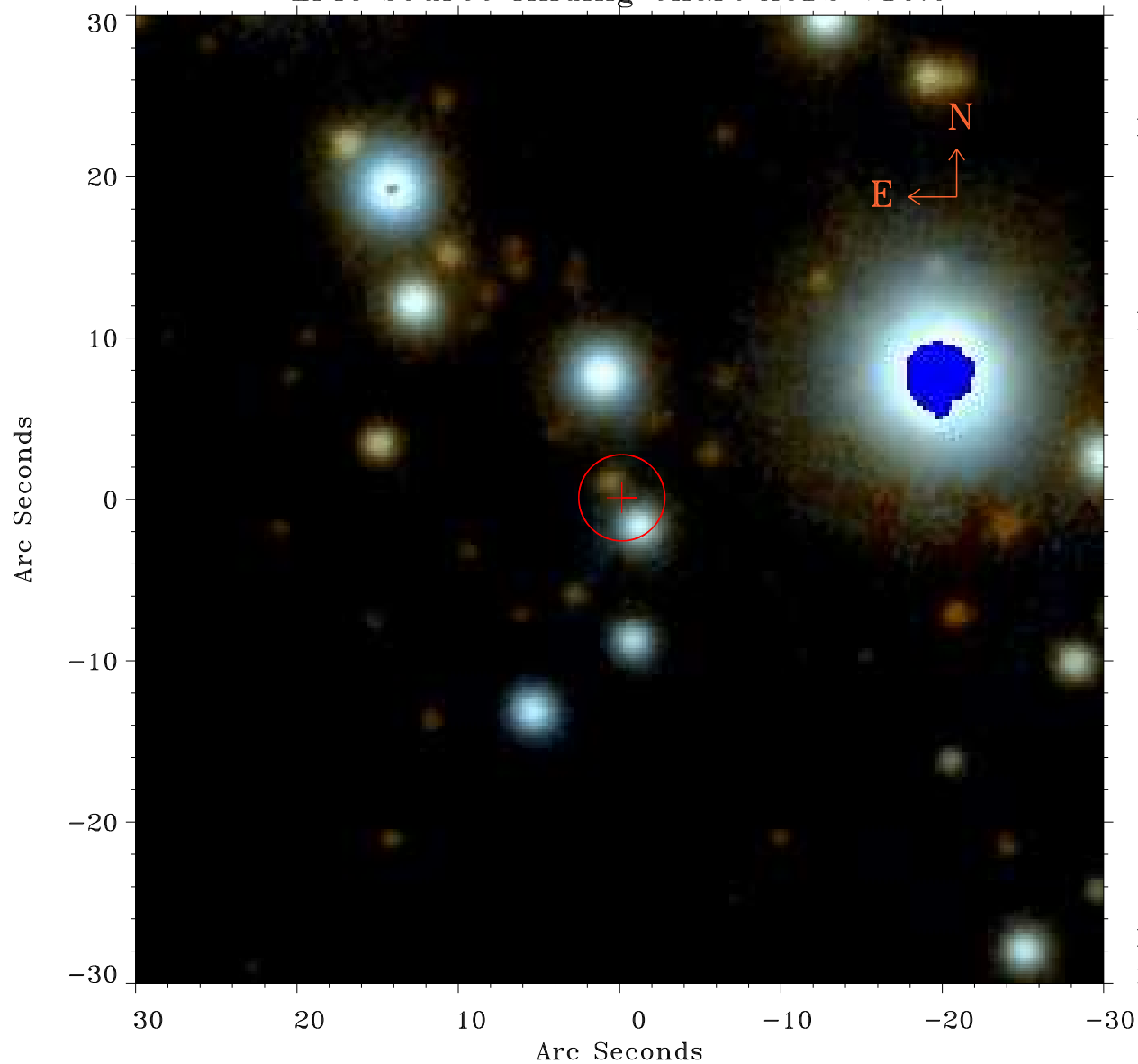


EPIC source finding chart ACDS V10.0



Principal Investigator :
Mr Constantin Cazorla

XMM target name :
Cyg OB2 5

OBS ID : 780040101
Source number : 62

X-ray coordinates :
 α : 20 33 19.25
 δ : +41 17 01.4

Center coordinates :
 α : 20 33 19.24
 δ : +41 17 01.5

Plate reference :
Origin : PanSTARRS-DR1

Color coding :
z band ●
(z+g)/2 ●
g band ●

Error:
R90 : 2.7 arsec

XMM SSC
May 4 01:49:51 2019