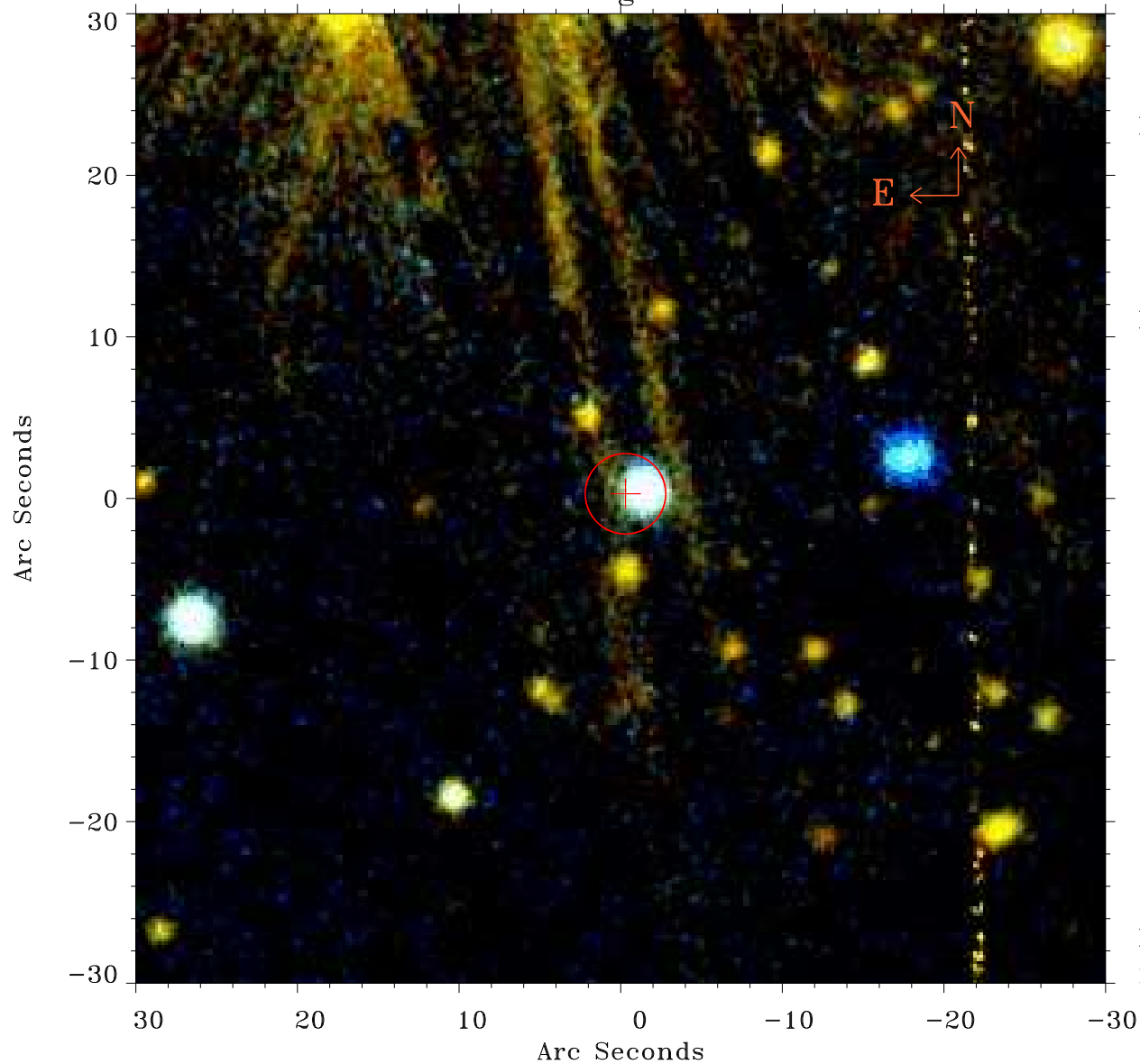


# EPIC source finding chart ACDS V10.0



Principal Investigator :

Mr Constantin Cazorla

XMM target name :

Cyg OB2 5

OBS ID : 780040101

Source number : 67

X-ray coordinates :

$\alpha$  : 20 32 40.10

$\delta$  : +41 13 37.0

Center coordinates :

$\alpha$  : 20 32 40.11

$\delta$  : +41 13 36.9

Plate reference :

Origin : PanSTARRS-DR1

Color coding :

z band ●

(z+g)/2 ●

g band ●

Error:

R90 : 2.5 arsec

XMM SSC

May 4 01:45:07 2019