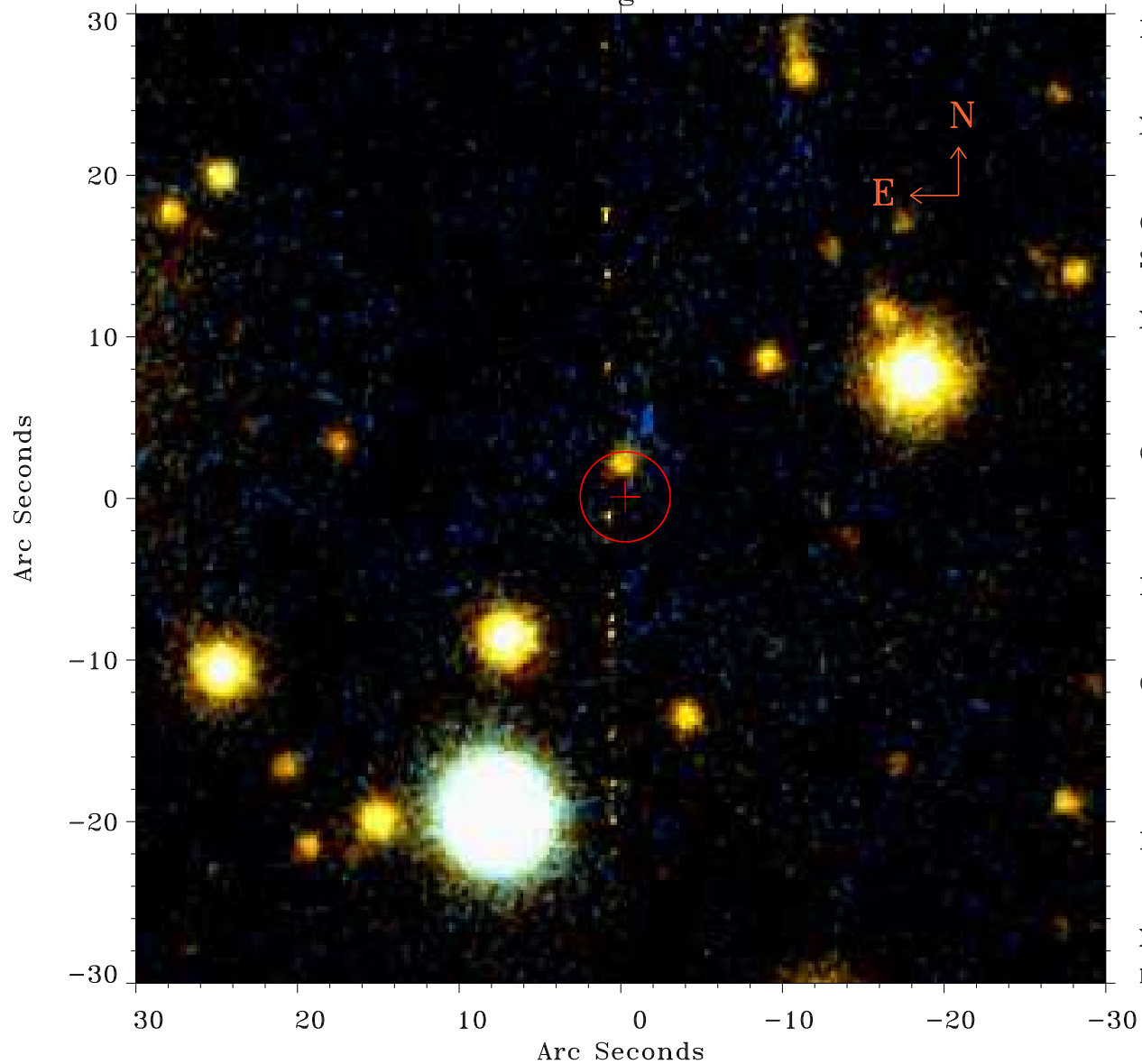


# EPIC source finding chart ACDS V10.0



Principal Investigator :

Mr Constantin Cazorla

XMM target name :

Cyg OB2 5

OBS ID : 780040101

Source number : 70

X-ray coordinates :

$\alpha$  : 20 32 27.55

$\delta$  : +41 13 57.8

Center coordinates :

$\alpha$  : 20 32 27.56

$\delta$  : +41 13 57.9

Plate reference :

Origin : PanSTARRS-DR1

Color coding :

z band ●

(z+g)/2 ●

g band ●

Error:

R90 : 2.8 arsec

XMM SSC

May 4 01:42:46 2019