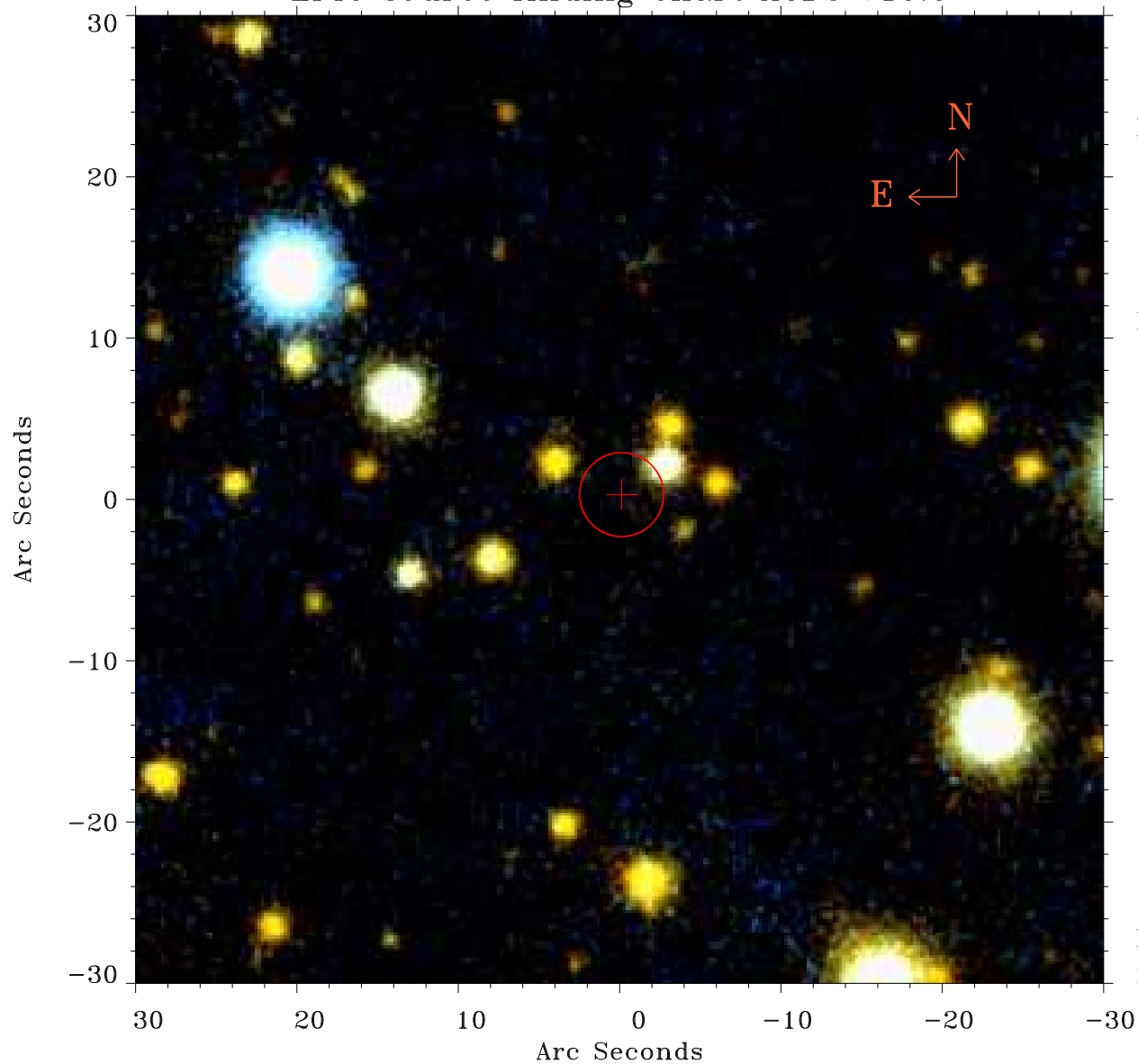


EPIC source finding chart ACDS V10.0



Principal Investigator :

Mr Constantin Cazorla

XMM target name :

Cyg OB2 5

OBS ID : 780040101

Source number : 74

X-ray coordinates :

α : 20 32 45.07

δ : +41 15 44.4

Center coordinates :

α : 20 32 45.07

δ : +41 15 44.3

Plate reference :

Origin : PanSTARRS-DR1

Color coding :

z band ●

(z+g)/2 ●

g band ●

Error:

R90 : 2.6 arsec

XMM SSC

May 4 01:46:05 2019