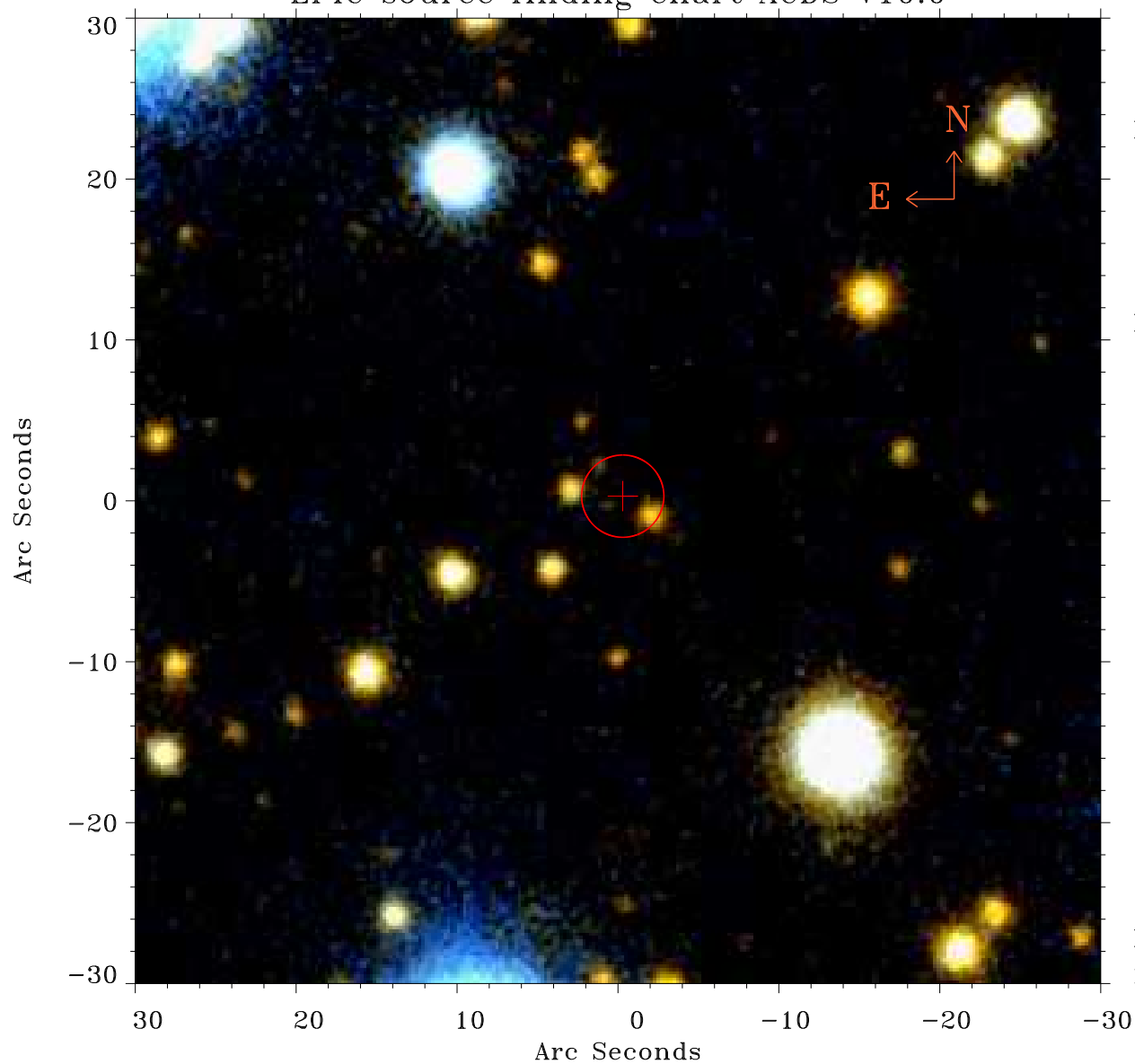


EPIC source finding chart ACDS V10.0



Principal Investigator :

Mr Constantin Cazorla

XMM target name :

Cyg OB2 5

OBS ID : 780040101

Source number : 75

X-ray coordinates :

α : 20 31 50.57

δ : +41 23 59.1

Center coordinates :

α : 20 31 50.58

δ : +41 23 59.0

Plate reference :

Origin : PanSTARRS-DR1

Color coding :

z band ●

(z+g)/2 ●

g band ●

Error:

R90 : 2.5 arsec

XMM SSC

May 4 01:39:18 2019