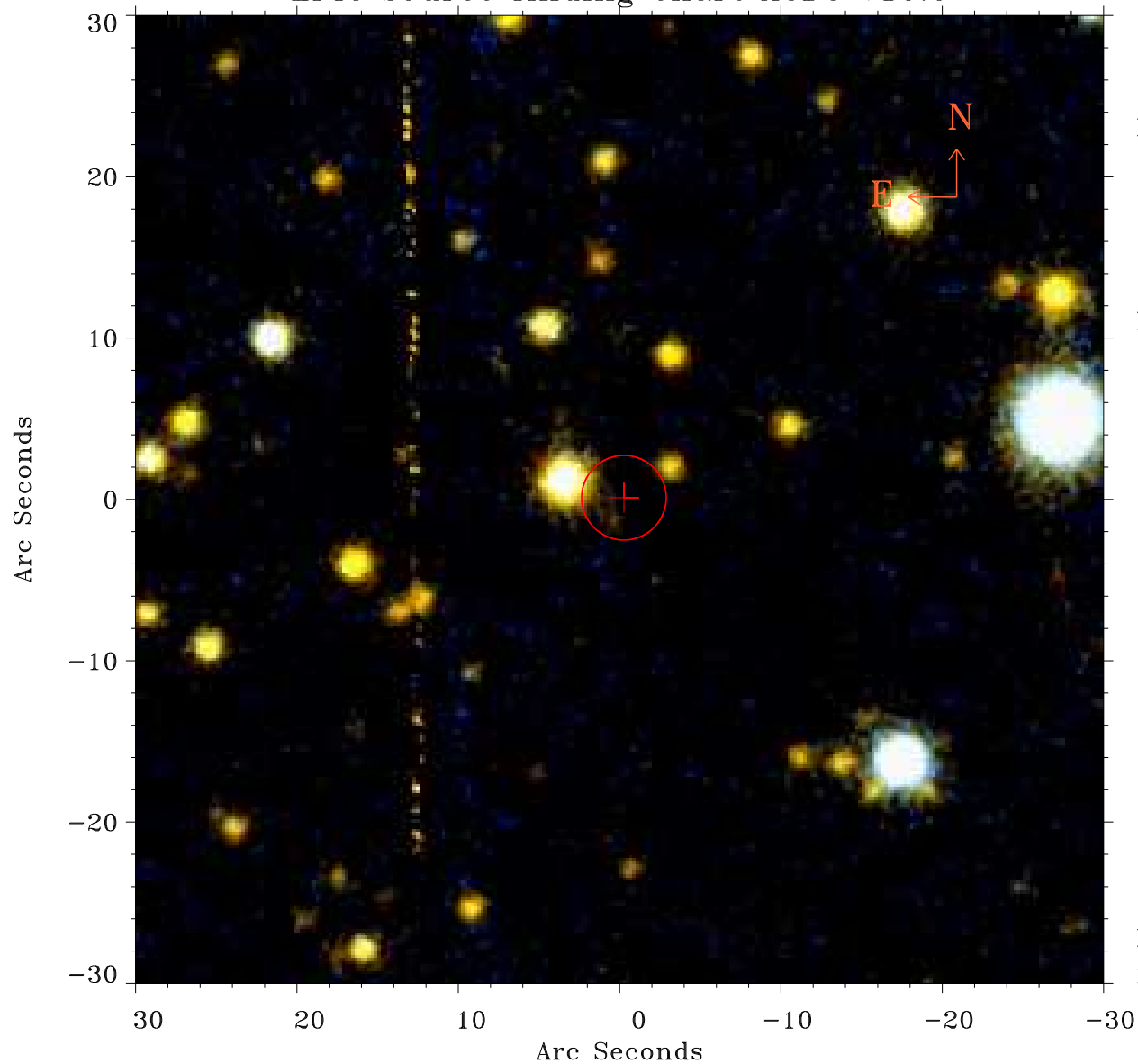


EPIC source finding chart ACDS V10.0



Principal Investigator :

Mr Constantin Cazorla

XMM target name :

Cyg OB2 5

OBS ID : 780040101

Source number : 103

X-ray coordinates :

α : 20 32 37.55

δ : +41 21 18.3

Center coordinates :

α : 20 32 37.56

δ : +41 21 18.4

Plate reference :

Origin : PanSTARRS-DR1

Color coding :

z band ●

(z+g)/2 ●

g band ●

Error:

R90 : 2.6 arcsec

XMM SSC

May 4 01:44:33 2019