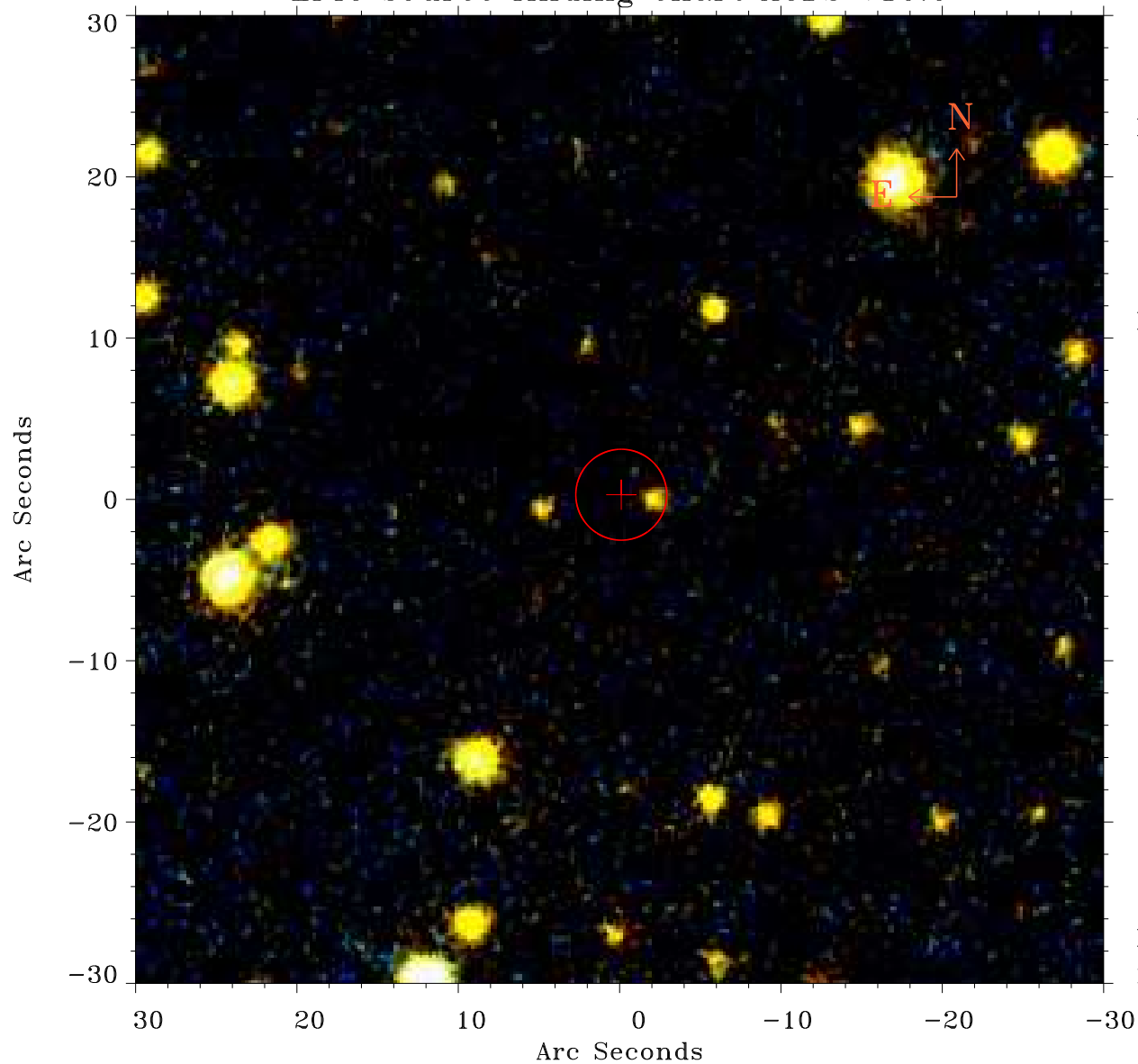


EPIC source finding chart ACDS V10.0



Principal Investigator :

Mr Constantin Cazorla

XMM target name :

Cyg OB2 5

OBS ID : 780040101

Source number : 106

X-ray coordinates :

α : 20 32 34.01

δ : +41 12 53.4

Center coordinates :

α : 20 32 34.00

δ : +41 12 53.3

Plate reference :

Origin : PanSTARRS-DR1

Color coding :

z band ●

(z+g)/2 ●

g band ●

Error:

R90 : 2.8 arcsec

XMM SSC

May 4 01:44:12 2019