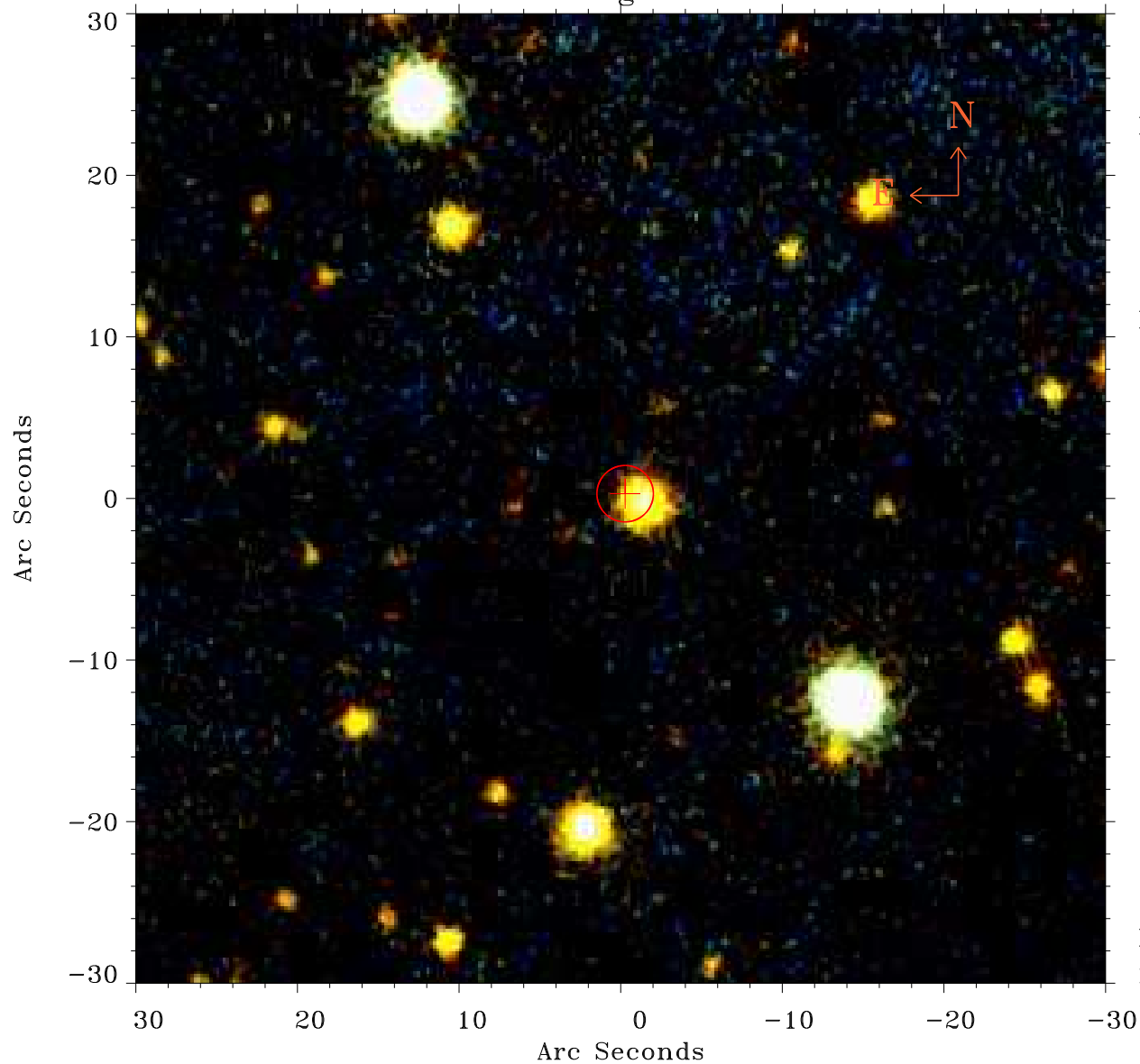


# EPIC source finding chart ACDS V10.0



Principal Investigator :

Mr Constantin Cazorla

XMM target name :

Cyg OB2 5

OBS ID : 780040101

Source number : 107

X-ray coordinates :

$\alpha$  : 20 32 00.28

$\delta$  : +41 13 43.4

Center coordinates :

$\alpha$  : 20 32 00.29

$\delta$  : +41 13 43.3

Plate reference :

Origin : PanSTARRS-DR1

Color coding :

z band ●

(z+g)/2 ●

g band ●

Error:

R90 : 1.7 arcsec

XMM SSC

May 4 01:40:05 2019