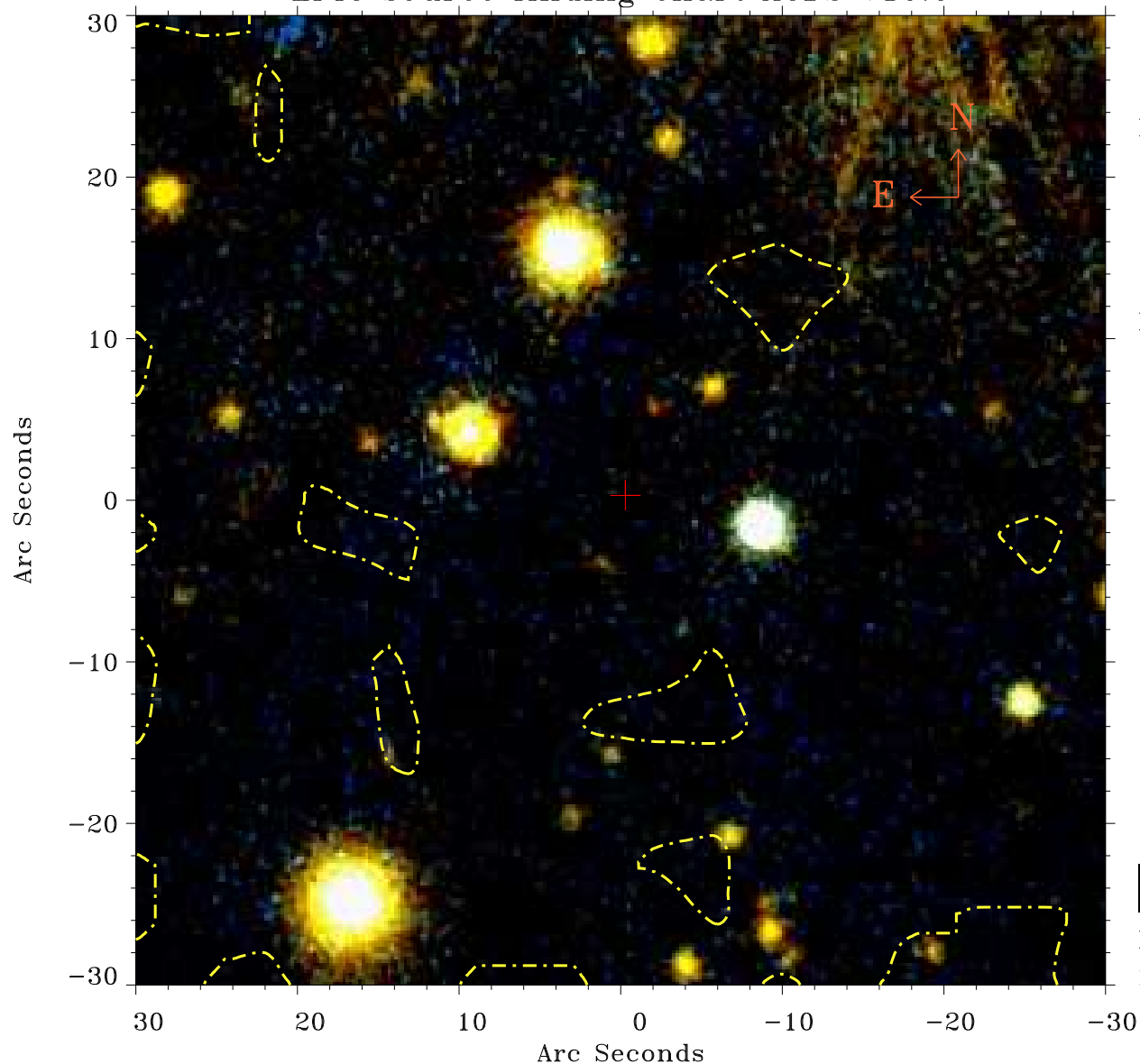


EPIC source finding chart ACDS V10.0



Principal Investigator :

Mr Constantin Cazorla

XMM target name :

Cyg OB2 5

OBS ID : 780040101

Source number : 114

X-ray coordinates :

α : 20 32 43.24

δ : +41 13 31.0

Center coordinates :

α : 20 32 43.25

δ : +41 13 30.9

Plate reference :

Origin : PanSTARRS-DR1

Color coding :

z band ●

(z+g)/2 ●

g band ●

Contour levels (counts) :



XMM SSC

May 4 01:45:52 2019