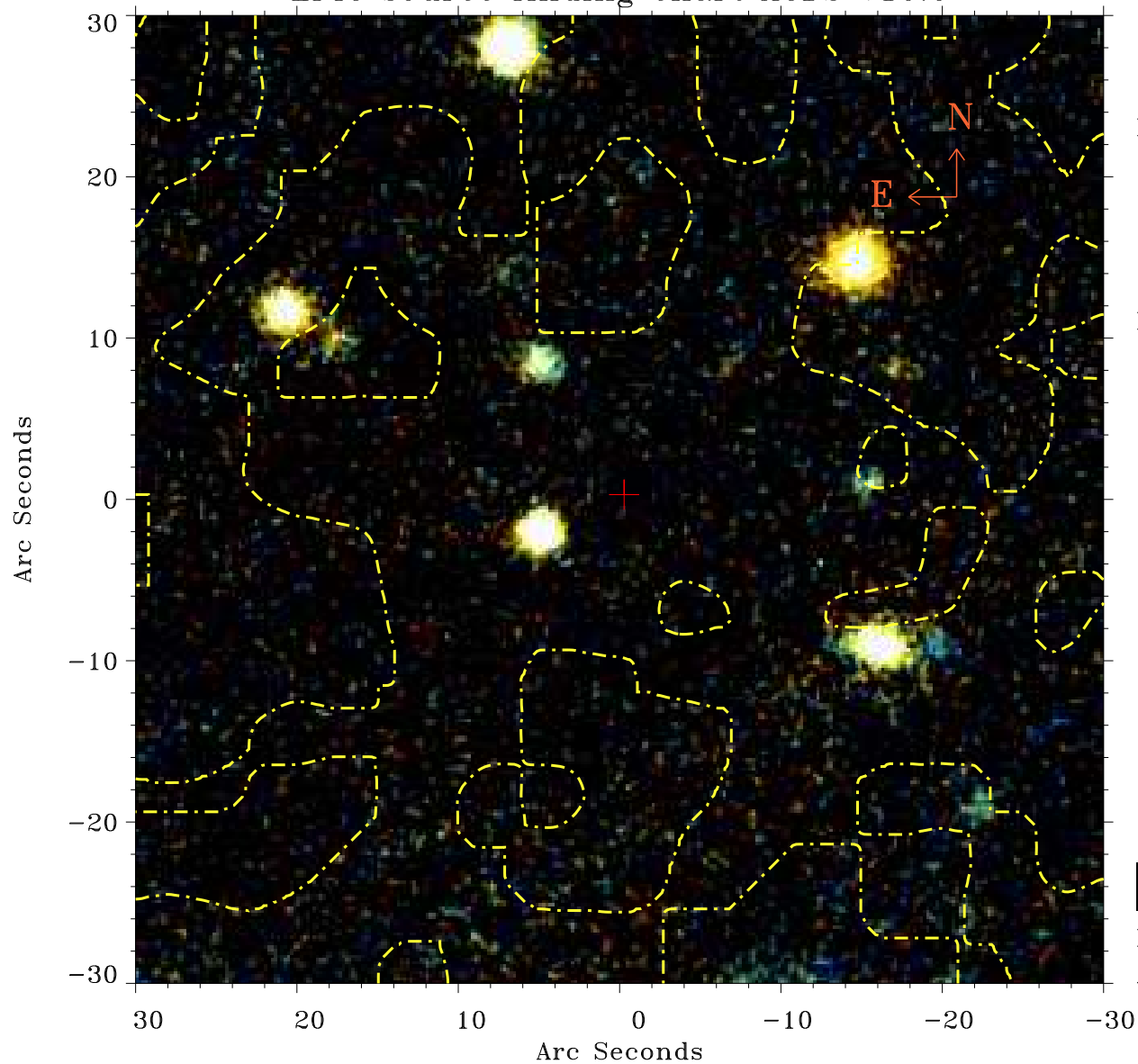


# EPIC source finding chart ACDS V10.0



Principal Investigator :  
Dr Tracey Turner

XMM target name :  
NGC 3227

OBS ID : 782520201  
Source number : 22

X-ray coordinates :  
 $\alpha$  : 10 23 58.95  
 $\delta$  : +19 44 24.3

Center coordinates :  
 $\alpha$  : 10 23 58.95  
 $\delta$  : +19 44 24.2

Plate reference :  
Origin : PanSTARRS-DR1

Color coding :  
z band ●  
(z+g)/2 ●  
g band ●

Contour levels (counts) :  
1.00E+00 1.57E+01  
6.25E+01 1.43E+02

XMM SSC  
Apr 18 22:30:54 2019