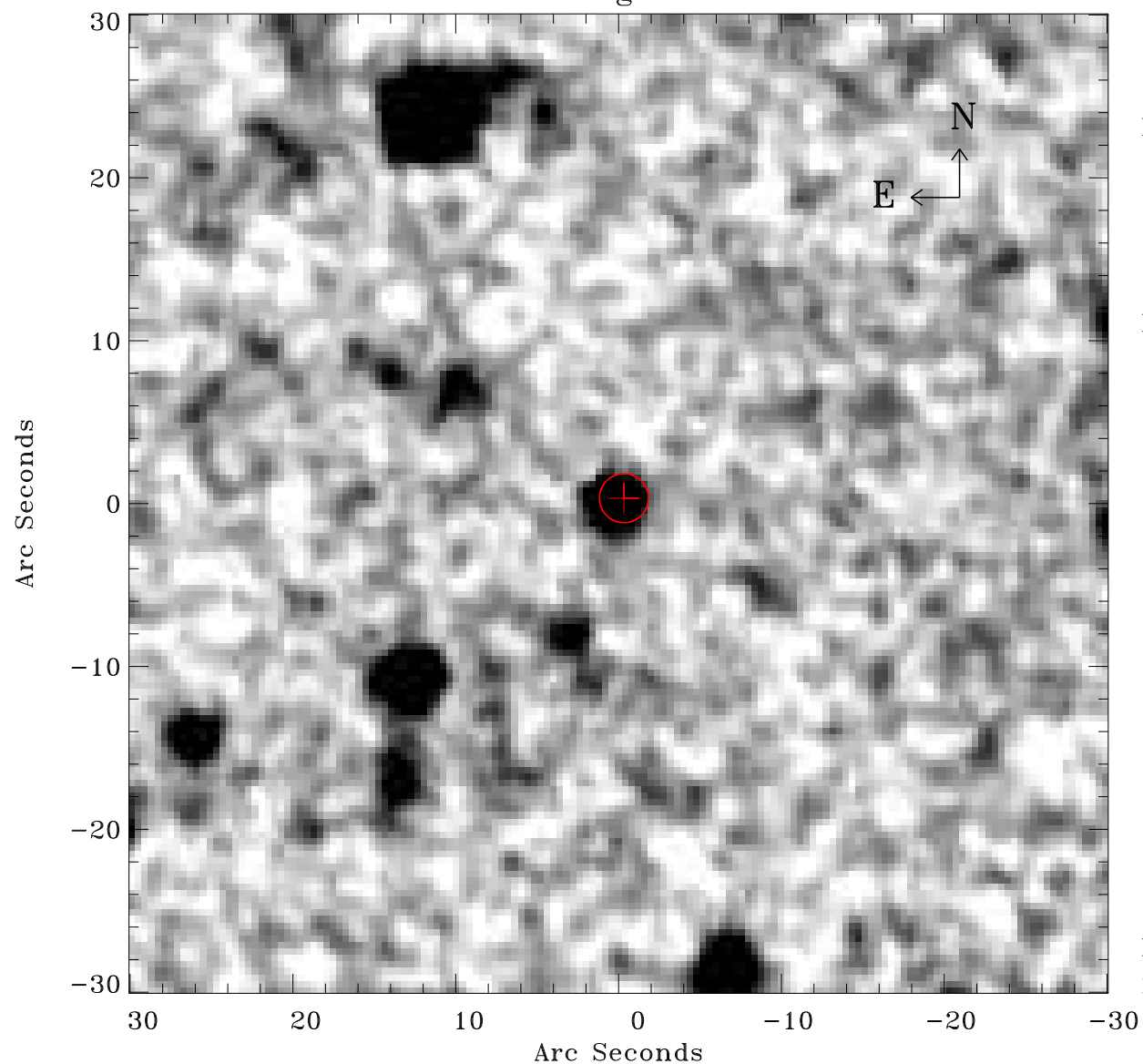


# EPIC source finding chart ACDS V10.0



Principal Investigator :

Dr Frank Haberl

XMM target name :

SMC Wing 6

OBS ID : 784690601

Source number : 12

X-ray coordinates :

$\alpha$  : 01 31 55.61

$\delta$  : -73 05 10.6

Center coordinates :

$\alpha$  : 01 31 55.59

$\delta$  : -73 05 10.5

Plate reference :

Origin : CDS HIPs Network

Plate : MAMA srcj

Pixel : 0.40 "/pix

Error circle :

$R_{90}$  (") : 1.5

XMM SSC

May 3 05:58:53 2019