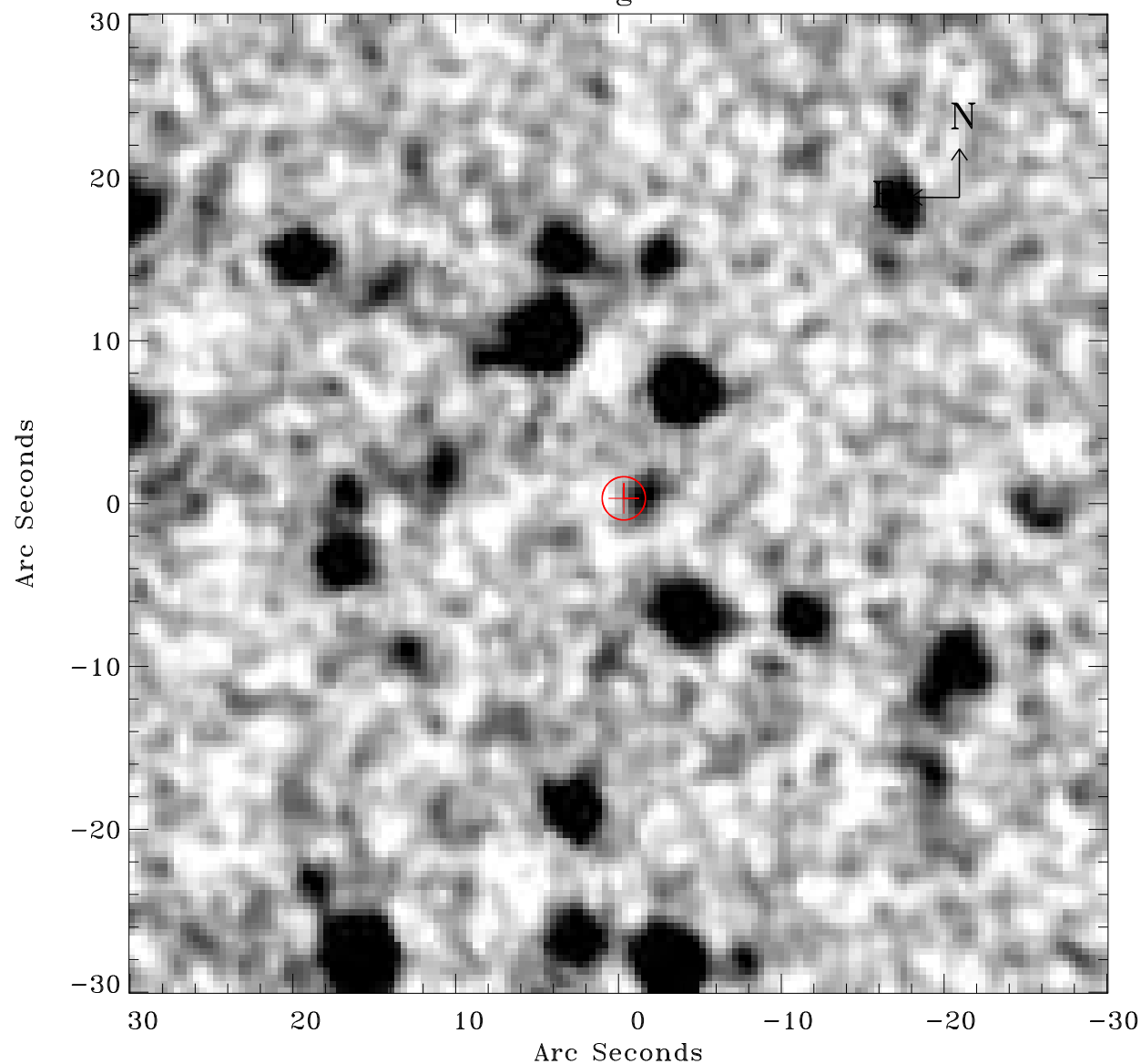


# EPIC source finding chart ACDS V10.0



Principal Investigator :

Dr Frank Haberl

XMM target name :

SMC Wing 6

OBS ID : 784690601

Source number : 18

X-ray coordinates :

$\alpha$  : 01 27 03.95

$\delta$  : -73 11 18.8

Center coordinates :

$\alpha$  : 01 27 03.94

$\delta$  : -73 11 18.8

Plate reference :

Origin : CDS HIPs Network

Plate : MAMA srcj

Pixel : 0.40 "/pix

Error circle :

$R_{90}$  (") : 1.3

XMM SSC

May 3 05:57:06 2019