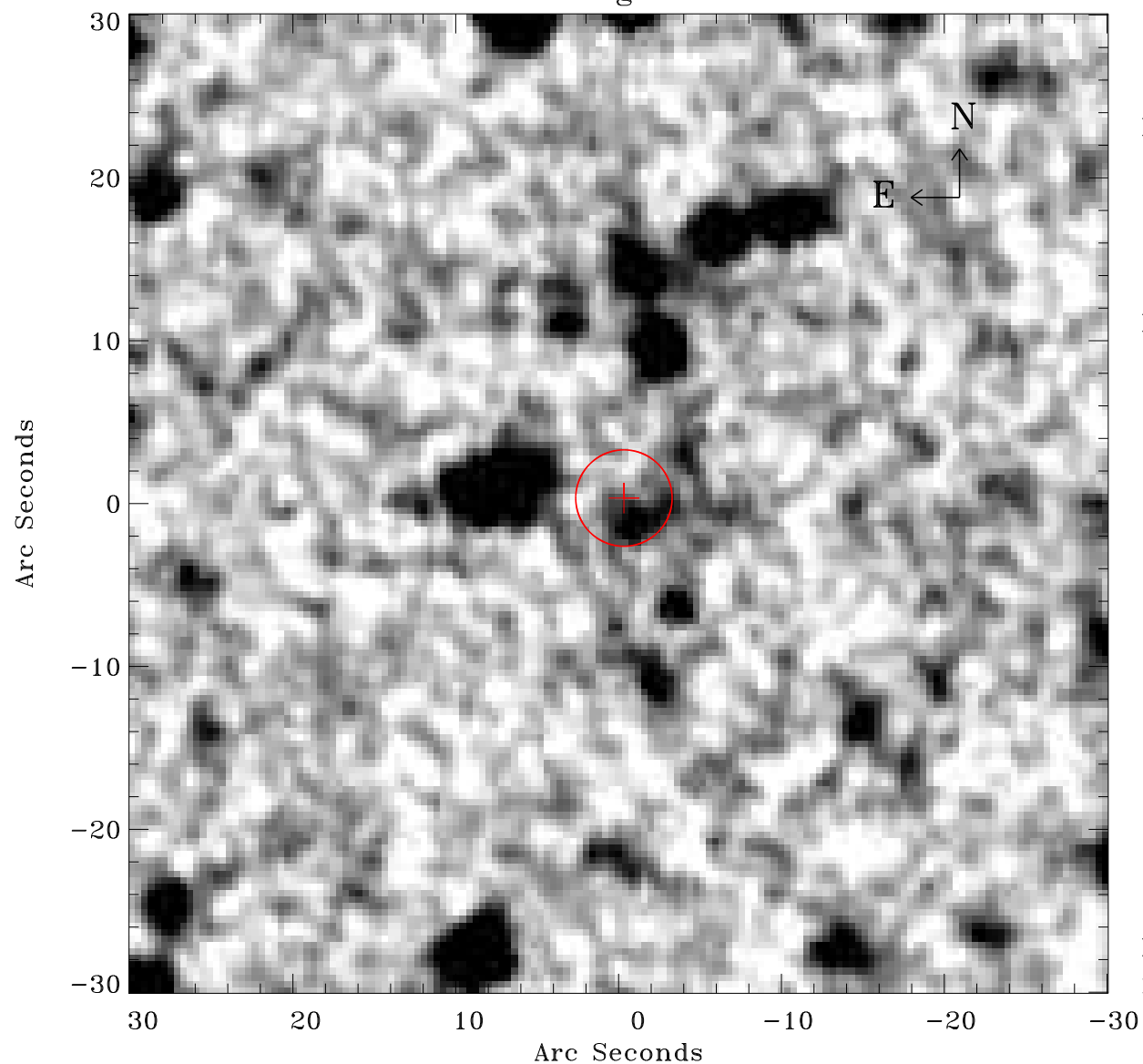


# EPIC source finding chart ACDS V10.0



Principal Investigator :

Dr Frank Haberl

XMM target name :

SMC Wing 6

OBS ID : 784690601

Source number : 69

X-ray coordinates :

$\alpha$  : 01 32 44.61

$\delta$  : -73 07 31.0

Center coordinates :

$\alpha$  : 01 32 44.60

$\delta$  : -73 07 31.0

Plate reference :

Origin : CDS HIPs Network

Plate : MAMA srcj

Pixel : 0.40 "/pix

Error circle :

$R_{90}$  (") : 2.9

XMM SSC

May 3 05:59:06 2019