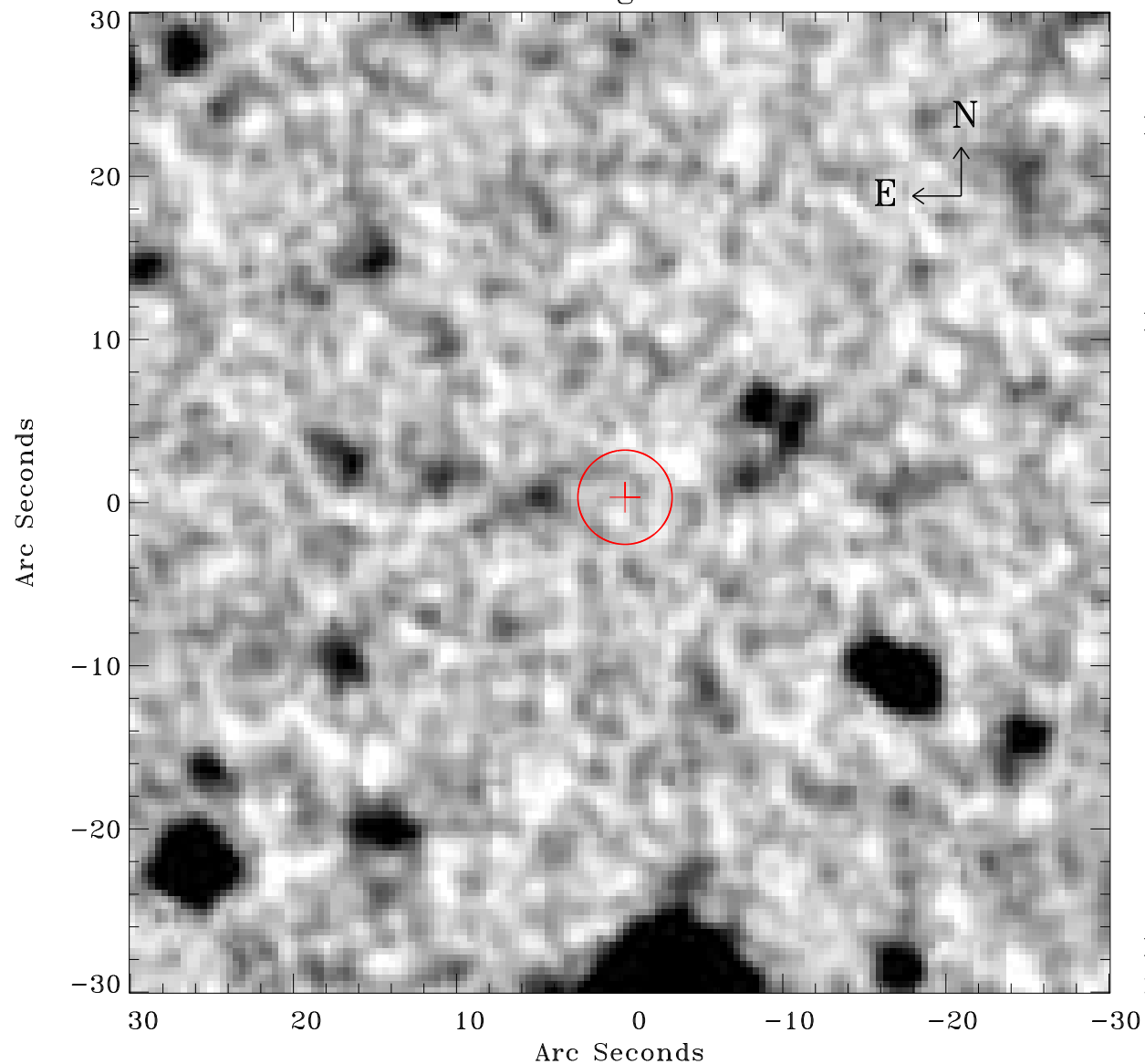


# EPIC source finding chart ACDS V10.0



Principal Investigator :

Dr Frank Haberl

XMM target name :

SMC Wing 6

OBS ID : 784690601

Source number : 84

X-ray coordinates :

$\alpha$  : 01 28 11.91

$\delta$  : -73 00 45.0

Center coordinates :

$\alpha$  : 01 28 11.89

$\delta$  : -73 00 44.9

Plate reference :

Origin : CDS HIPs Network

Plate : MAMA srcj

Pixel : 0.40 "/pix

Error circle :

$R_{90}$  (") : 2.9

XMM SSC

May 3 05:57:27 2019