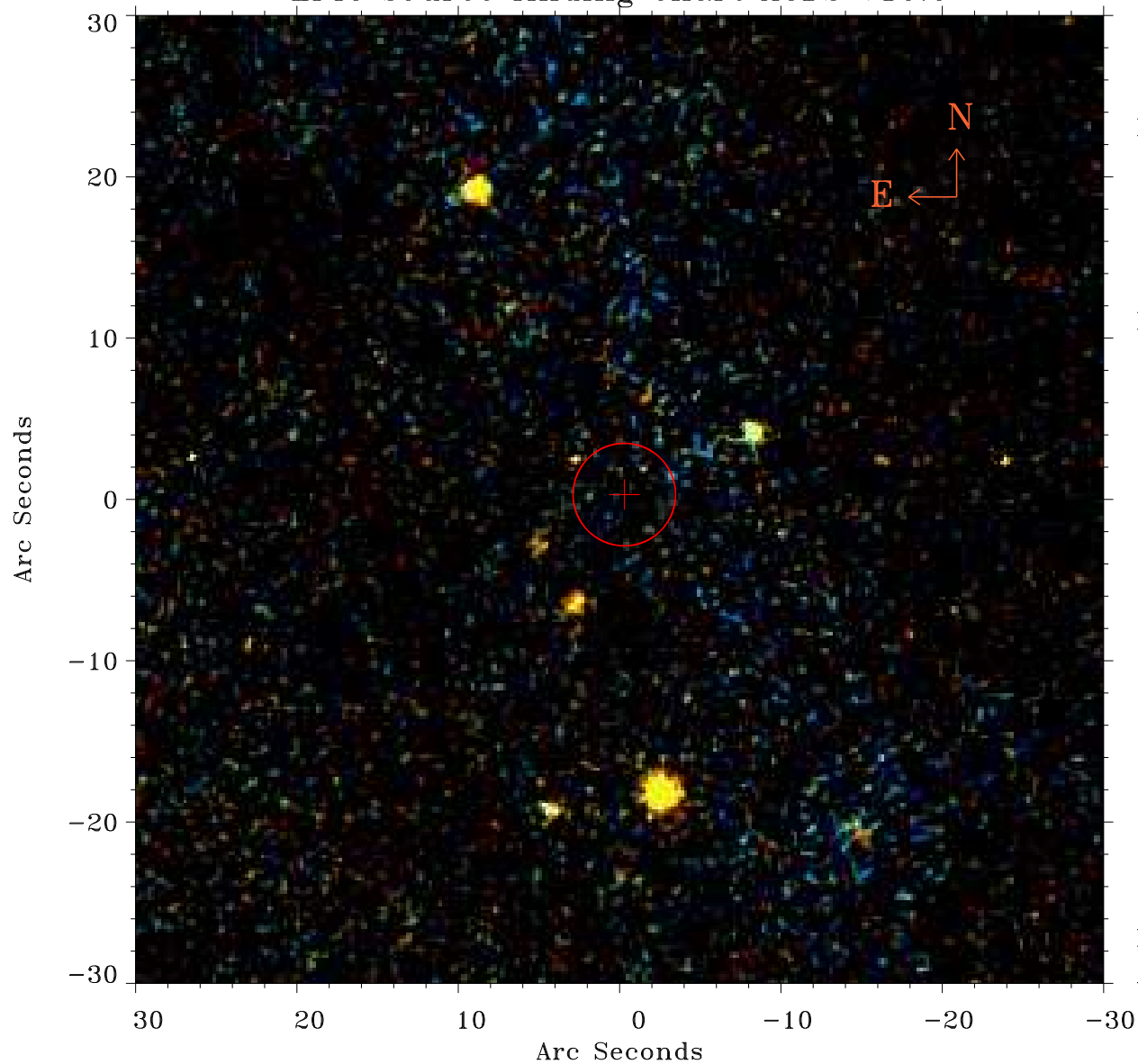


# EPIC source finding chart ACDS V10.0



Principal Investigator :

Prof Marcel Agueros

XMM target name :

2M J04081110+165222

OBS ID : 785110901

Source number : 15

X-ray coordinates :

$\alpha$  : 04 08 43.28

$\delta$  : +16 48 41.8

Center coordinates :

$\alpha$  : 04 08 43.28

$\delta$  : +16 48 41.7

Plate reference :

Origin : PanSTARRS-DR1

Color coding :

z band ●

(z+g)/2 ●

g band ●

Error:

R90 : 3.2 arsec

XMM SSC

Apr 26 09:05:05 2019