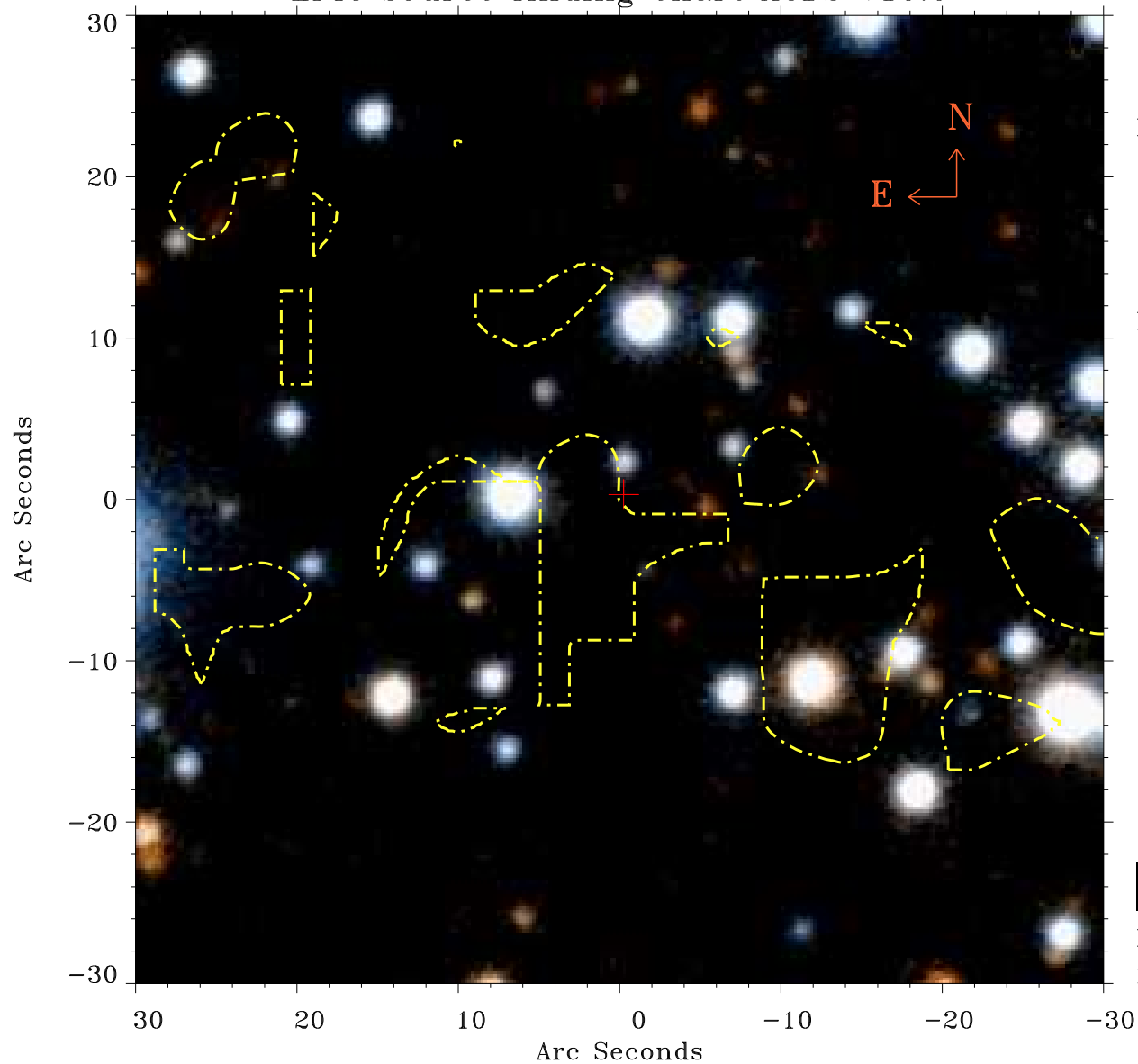


# EPIC source finding chart ACDS V10.0



Principal Investigator :

Prof Jurgen Schmitt

XMM target name :

HD 356156

OBS ID : 785130201

Source number : 12

X-ray coordinates :

$\alpha$  : 19 54 53.45

$\delta$  : +10 37 06.6

Center coordinates :

$\alpha$  : 19 54 53.46

$\delta$  : +10 37 06.5

Plate reference :

Origin : PanSTARRS-DR1

Color coding :

z band ●

(z+g)/2 ●

g band ●

Contour levels (counts) :



XMM SSC

May 3 13:32:10 2019