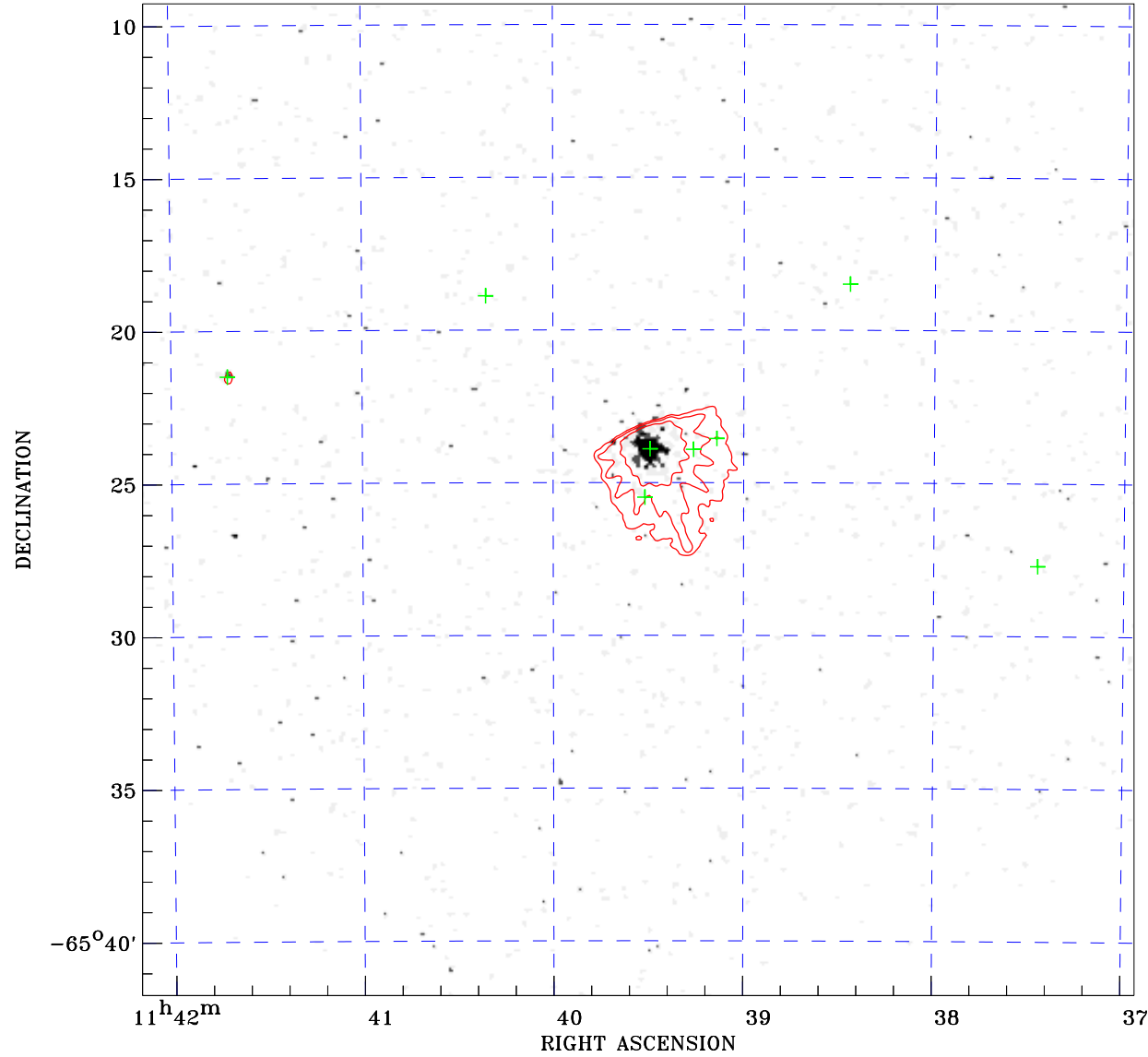


PDF XMM ROSAT image ACDS V10.0



ROSAT image gray scale (Log) :

$\langle 4.179\text{E-}04$ $\rangle 1.198\text{E-}03$

(counts s⁻¹)

⊙ Epic image contour
levels at 2, 7 and 30 σ

+ Detected Epic sources

Principal Investigator :
Prof Jurgen Schmitt

XMM target name :
PMN J1139-6523

Observation ID :
0785131001

Epic image :
 α : 11 39 33.19
 δ : -65 25 33.7
Energy band : 0.2-12.0 keV
MOS1 : 10163 s
MOS2 : 10303 s
PN : 10476 s

Contour levels (counts) :
2 σ :1.814E+00 7 σ :5.952E+00
30 σ 2.498E+01

Nearest ROSAT image
from Epic image center :
Observation : 201642h
Instrument : HRI
 α : 11 39 44.15
 δ : -65 25 36.2

Other ROSAT images :
None

XMM SSC
Apr 28 04:34:20 2019