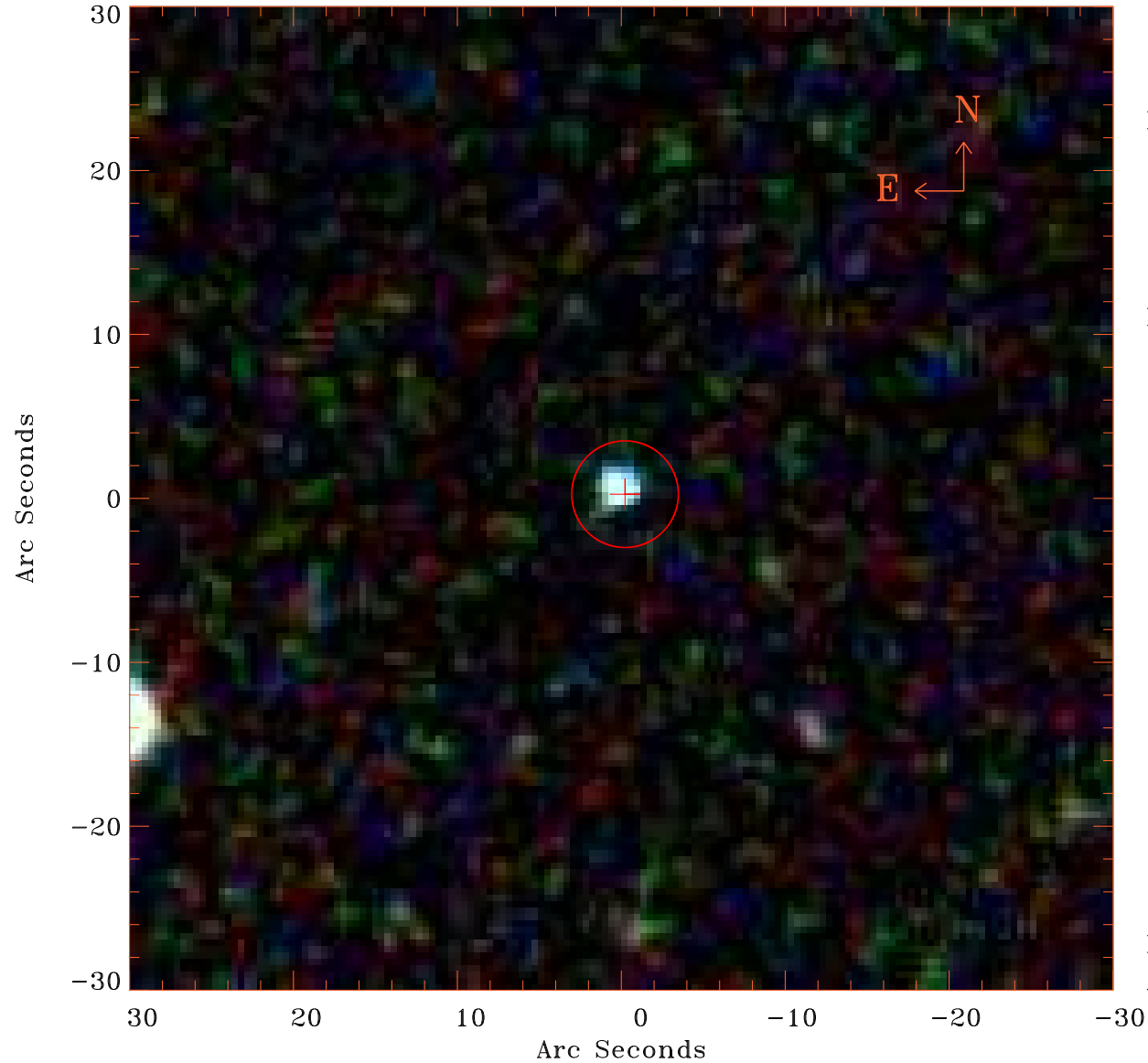


# EPIC source finding chart V10.0



Principal Investigator :

Prof Jurgen Schmitt

XMM target name :

FG UMa

OBS ID : 785131201

Source number : 3

X-ray coordinates :

$\alpha$  : 10 23 06.82

$\delta$  : +61 01 38.1

Center coordinates :

$\alpha$  : 10 23 06.80

$\delta$  : +61 01 38.3

Plate reference :

Origin : SDSS

Color coding :

i band ●

r band ●

g band ●

Error circle :

$R_{90}$  (") : 3.2

XMM SSC

Apr 23 10:45:06 2019