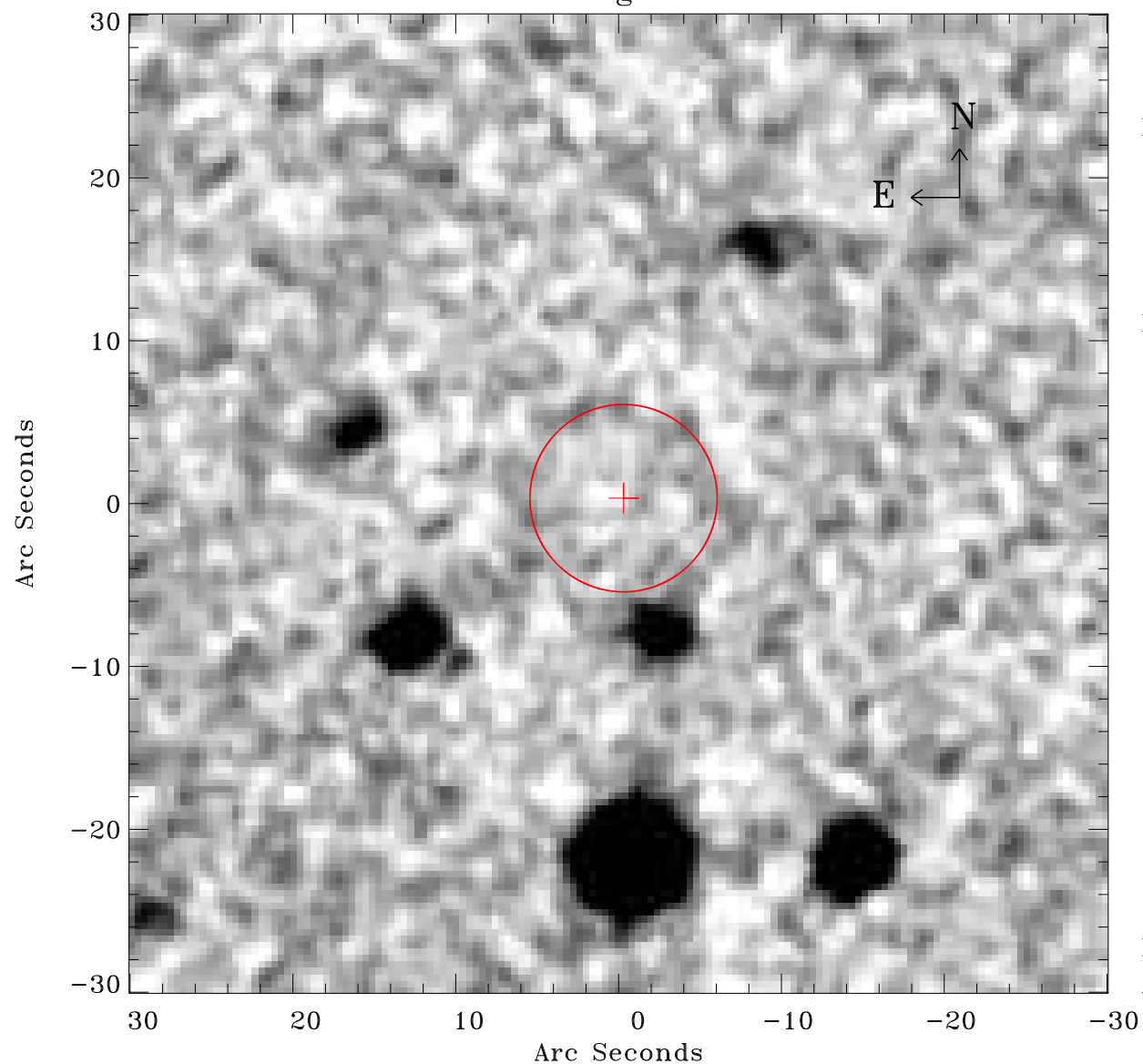


# EPIC source finding chart ACDS V10.0



Principal Investigator :

Dr Ikuyuki Mitsuishi

XMM target name :

1RXSJ094124.5-33235

OBS ID : 801271201

Source number : 10

X-ray coordinates :

$\alpha$  : 09 42 05.42

$\delta$  : -33 28 41.8

Center coordinates :

$\alpha$  : 09 42 05.42

$\delta$  : -33 28 41.8

Plate reference :

Origin : CDS HIPs Network

Plate : MAMA srcj

Pixel : 0.40 "/pix

Error circle :

$R_{90}$  (") : 5.7

XMM SSC

Apr 28 13:09:05 2019