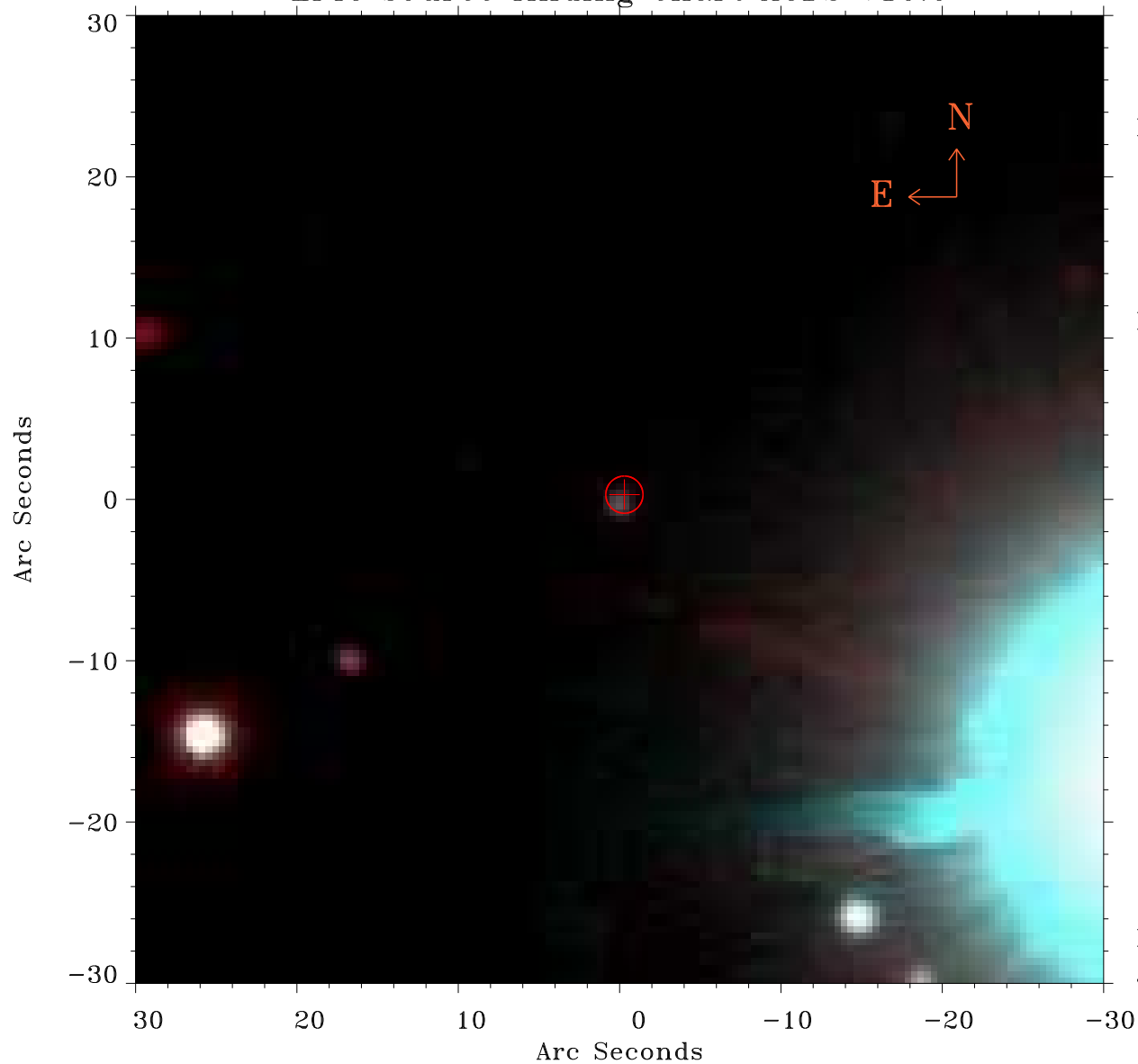


# EPIC source finding chart ACDS V10.0



Principal Investigator :

Dr Ikuyuki Mitsuishi

XMM target name :

1RXSJ052246.2+02474

OBS ID : 801271501

Source number : 2

X-ray coordinates :

$\alpha$  : 05 22 48.25

$\delta$  : +02 48 03.3

Center coordinates :

$\alpha$  : 05 22 48.24

$\delta$  : +02 48 03.4

Plate reference :

Origin : PanSTARRS-DR1

Color coding :

z band ●

(z+g)/2 ●

g band ●

Error:

R90 : 1.1 arsec

XMM SSC

Jan 19 10:46:55 2025