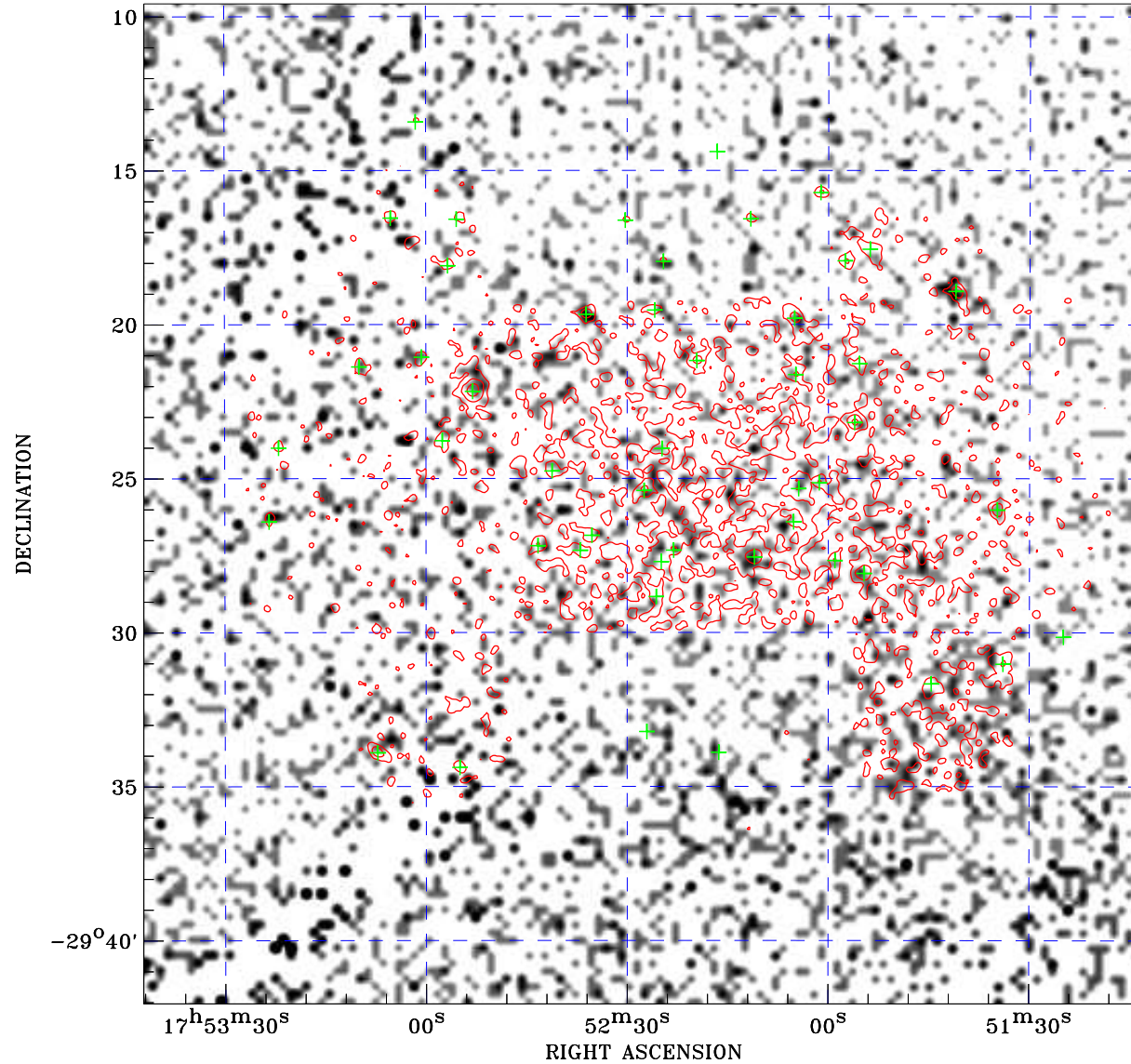


PDF XMM ROSAT image ACDS V10.0



Principal Investigator :
Dr Gabriele Ponti

XMM target name :
GCL South

Observation ID :
0801682501

Epic image :
 α : 17 52 27.52
 δ : -29 25 49.7
Energy band : 0.2–12.0 keV
MOS1 : 13617 s
MOS2 : 13623 s
PN : 0 s

Contour levels (counts) :
 2σ :9.633E-01 7σ :2.364E+00
 30σ :8.806E+00

Nearest ROSAT image
from Epic image center :
Observation : 400201p
Instrument : PSPCB
 α : 17 51 52.19
 δ : -29 23 24.2

Other ROSAT images :
None

XMM SSC
Jan 19 09:08:21 2025

ROSAT image gray scale (Log) :
[Scale bar]
< 1.584E-04 > 1.137E-03
(counts s⁻¹)

⊙ Epic image contour
levels at 2, 7 and 30 σ

+ Detected Epic sources