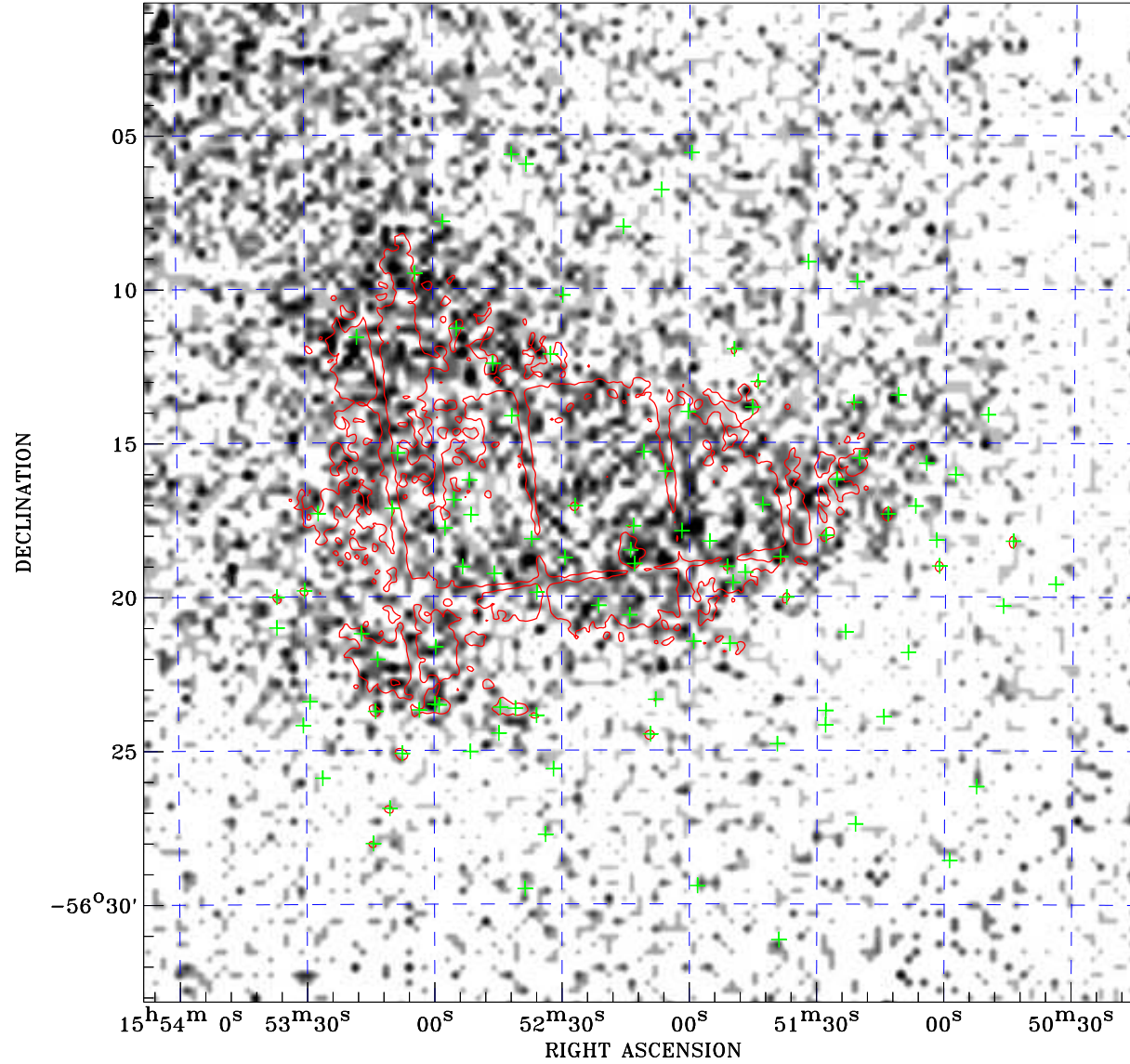



PDF XMM ROSAT image ACDS V10.0



ROSAT image gray scale (Log) :

 < 1.570E-04 > 1.006E-03
 (counts s⁻¹)

⊙ Epic image contour
 levels at 2, 7 and 30σ

+ Detected Epic sources

Principal Investigator :
 Dr Tea Temim

XMM target name :
 MSH 15-56 (1)

Observation ID :
 0802080801

Epic image :
 α : 15 52 10.86
 δ : -56 16 57.6
 Energy band : 0.2-12.0 keV
 MOS1 : 42138 s
 MOS2 : 42393 s
 PN : 38573 s

Contour levels (counts) :
 2σ :8.758E+00 7σ :2.349E+01
 30σ :9.125E+01

Nearest ROSAT image
 from Epic image center :
 Observation : 500010p
 Instrument : PSPCB
 α : 15 52 43.24
 δ : -56 16 12.1

Other ROSAT images :
 None

XMM SSC
 Jul 17 21:35:32 2019