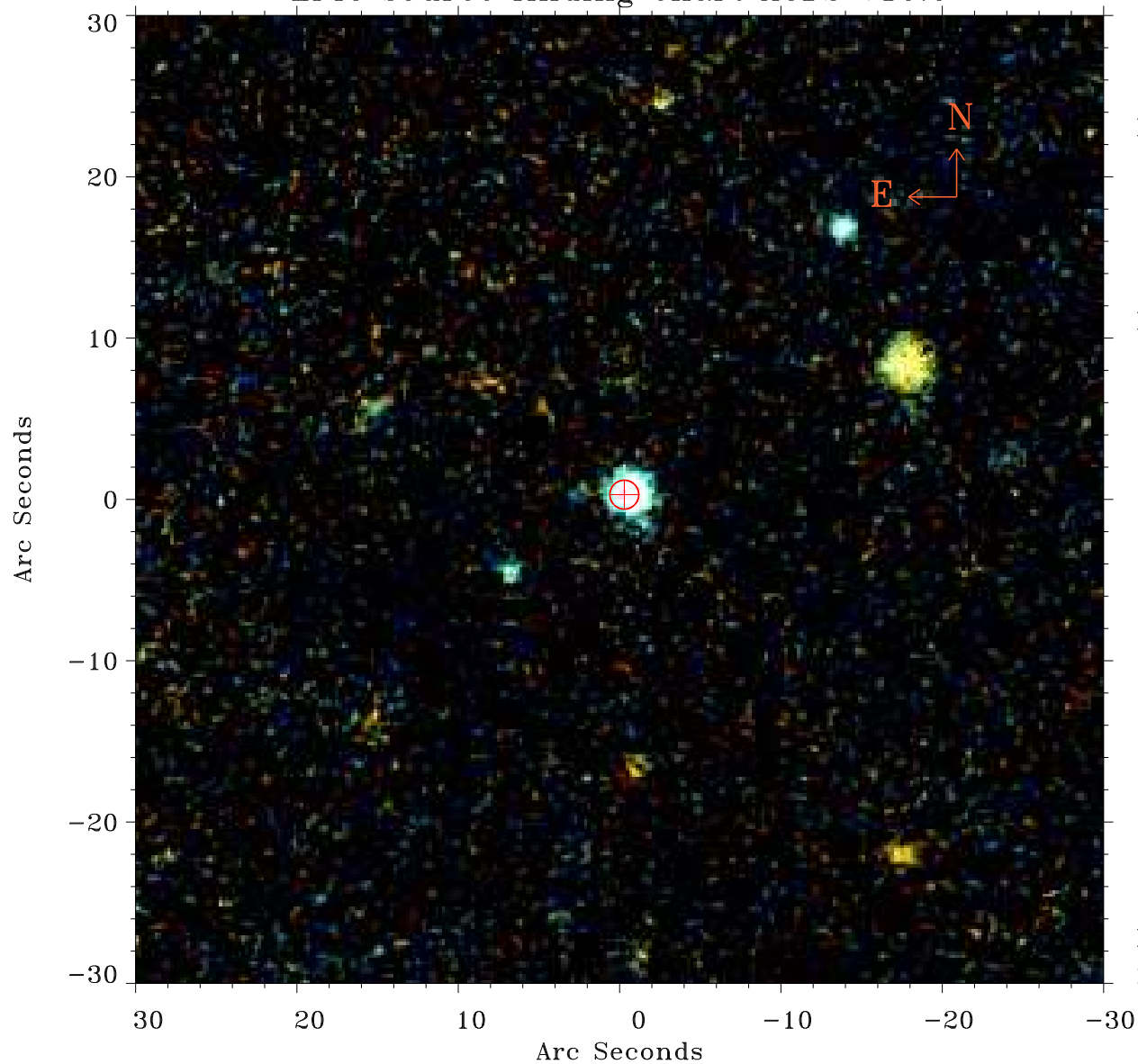


EPIC source finding chart ACDS V10.0



Principal Investigator :

Dr Michael Koss

XMM target name :

2MASX J02420381+051

OBS ID : 802200401

Source number : 4

X-ray coordinates :

α : 02 42 54.29

δ : +05 12 33.5

Center coordinates :

α : 02 42 54.30

δ : +05 12 33.4

Plate reference :

Origin : PanSTARRS-DR1

Color coding :

z band ●

(z+g)/2 ●

g band ●

Error:

R90 : 0.9 arsec

XMM SSC

May 3 17:38:25 2019