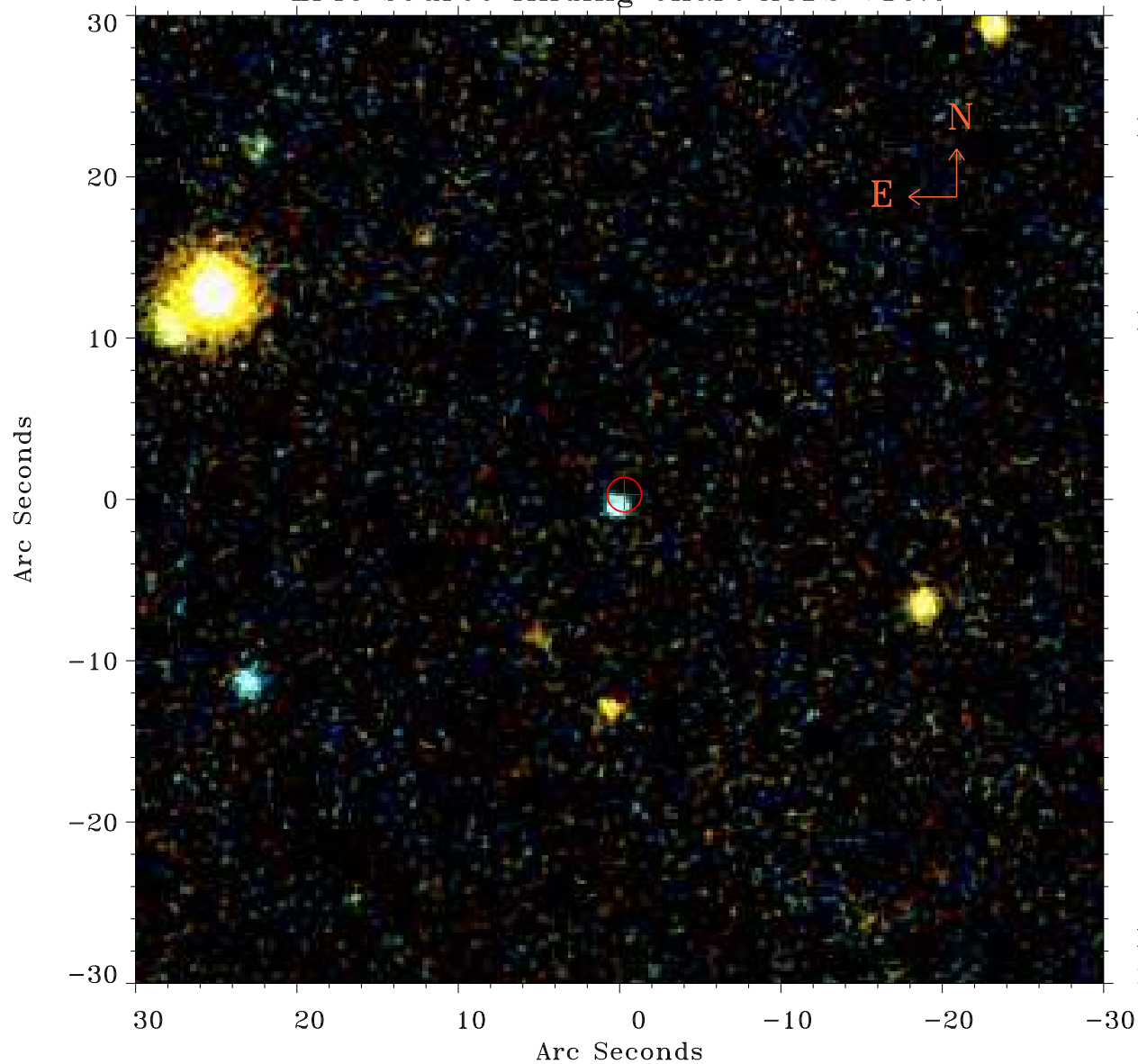


# EPIC source finding chart ACDS V10.0



Principal Investigator :

Dr Michael Koss

XMM target name :

2MASX J02420381+051

OBS ID : 802200401

Source number : 6

X-ray coordinates :

$\alpha$  : 02 41 59.22

$\delta$  : +05 14 13.2

Center coordinates :

$\alpha$  : 02 41 59.23

$\delta$  : +05 14 13.1

Plate reference :

Origin : PanSTARRS-DR1

Color coding :

z band ●

(z+g)/2 ●

g band ●

Error:

R90 : 1.1 arcsec

XMM SSC

May 3 17:35:00 2019