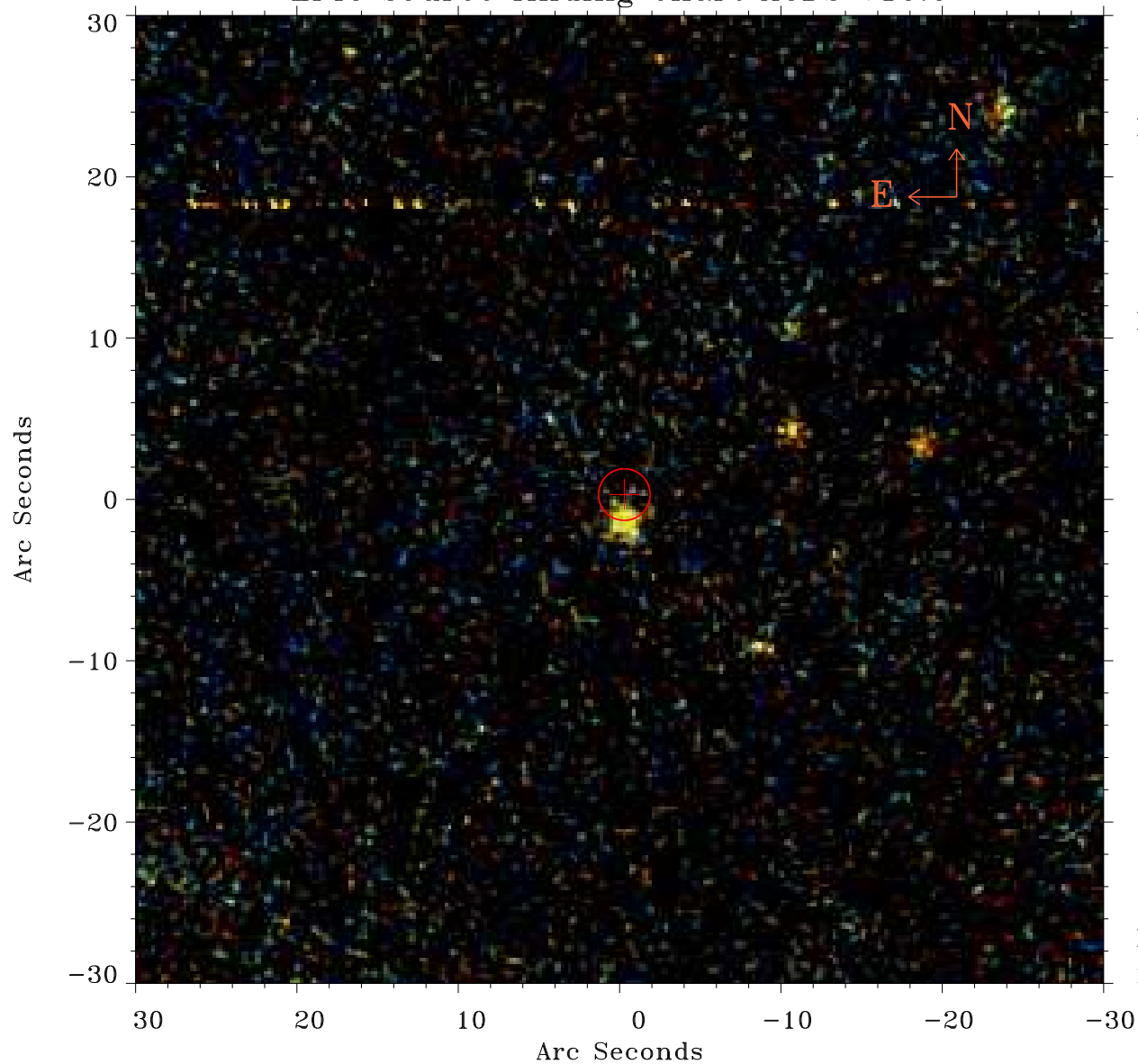


# EPIC source finding chart ACDS V10.0



Principal Investigator :

Dr Michael Koss

XMM target name :

2MASX J02420381+051

OBS ID : 802200401

Source number : 14

X-ray coordinates :

$\alpha$  : 02 41 23.01

$\delta$  : +05 10 38.8

Center coordinates :

$\alpha$  : 02 41 23.02

$\delta$  : +05 10 38.7

Plate reference :

Origin : PanSTARRS-DR1

Color coding :

z band ●

(z+g)/2 ●

g band ●

Error:

R90 : 1.6 arcsec

XMM SSC

May 3 17:33:27 2019