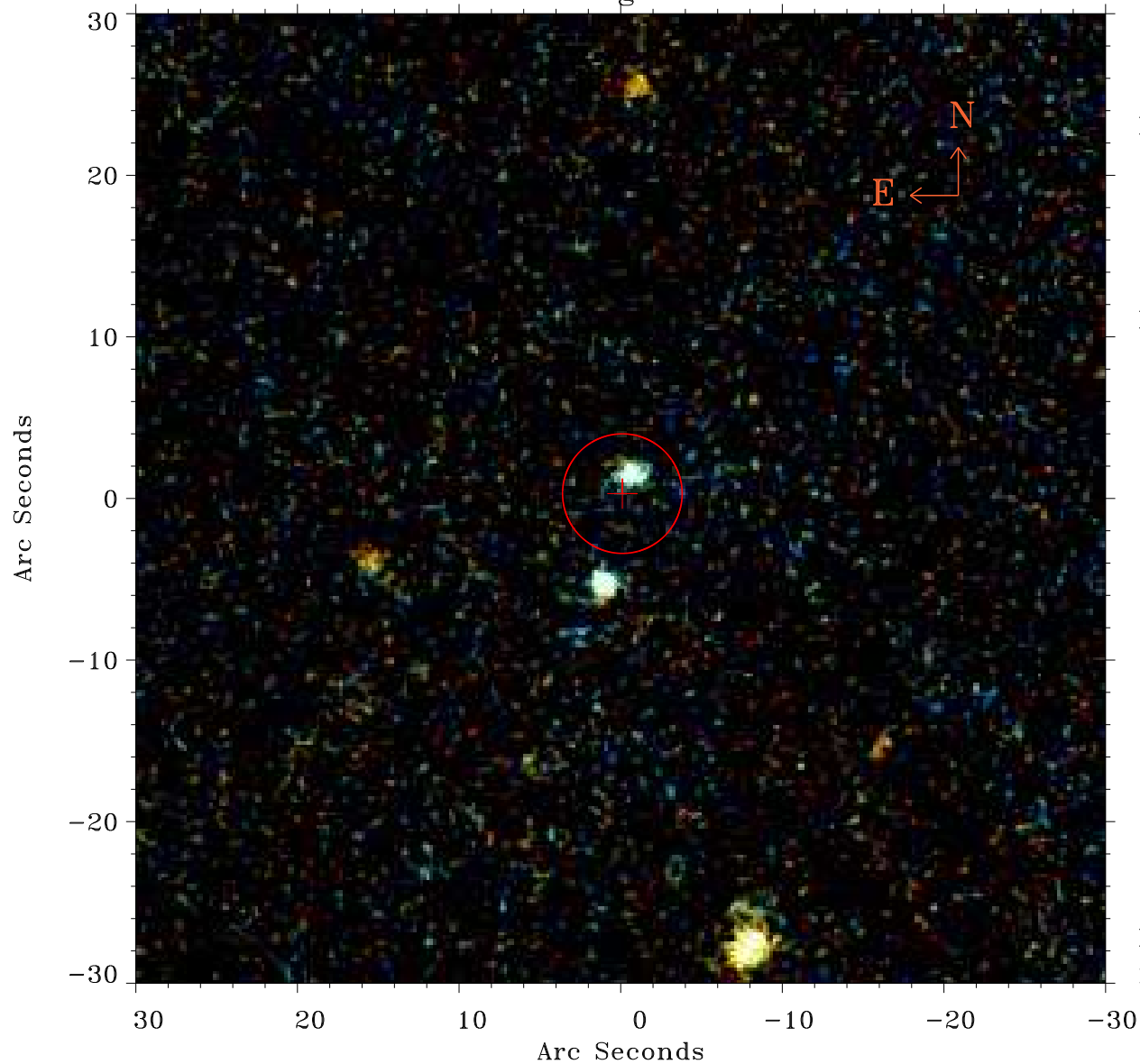


EPIC source finding chart ACDS V10.0



Principal Investigator :

Dr Michael Koss

XMM target name :

2MASX J02420381+051

OBS ID : 802200401

Source number : 45

X-ray coordinates :

α : 02 42 01.68

δ : +05 17 00.1

Center coordinates :

α : 02 42 01.67

δ : +05 17 00.1

Plate reference :

Origin : PanSTARRS-DR1

Color coding :

z band ●

(z+g)/2 ●

g band ●

Error:

R90 : 3.7 arcsec

XMM SSC

May 3 17:35:11 2019