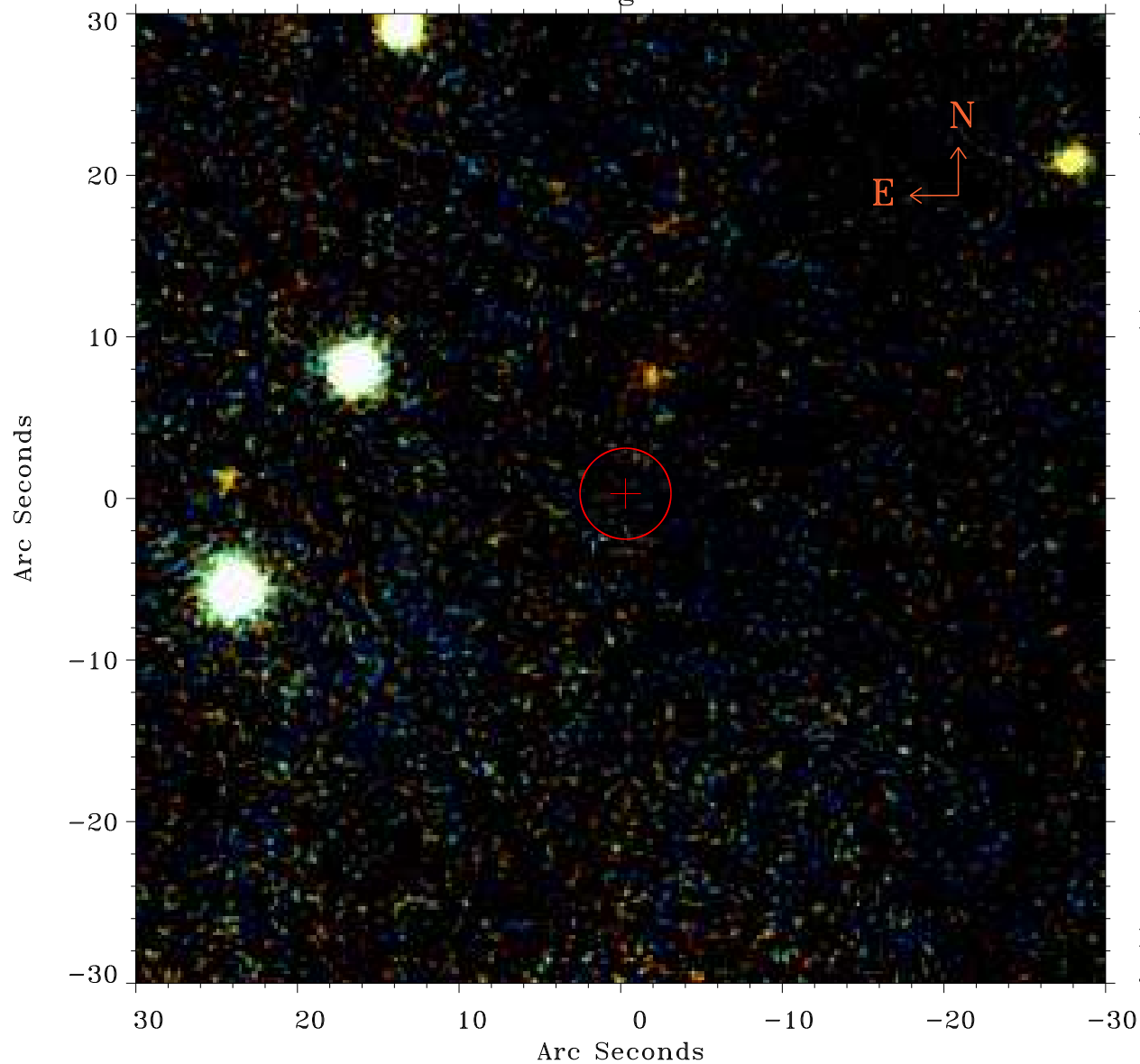


# EPIC source finding chart ACDS V10.0



Principal Investigator :

Dr Michael Koss

XMM target name :

BAT 1268

OBS ID : 802830501

Source number : 45

X-ray coordinates :

$\alpha$  : 05 22 49.11

$\delta$  : +07 36 32.2

Center coordinates :

$\alpha$  : 05 22 49.12

$\delta$  : +07 36 32.1

Plate reference :

Origin : PanSTARRS-DR1

Color coding :

z band ●

(z+g)/2 ●

g band ●

Error:

R90 : 2.8 arsec

XMM SSC

Jul 18 06:51:05 2019