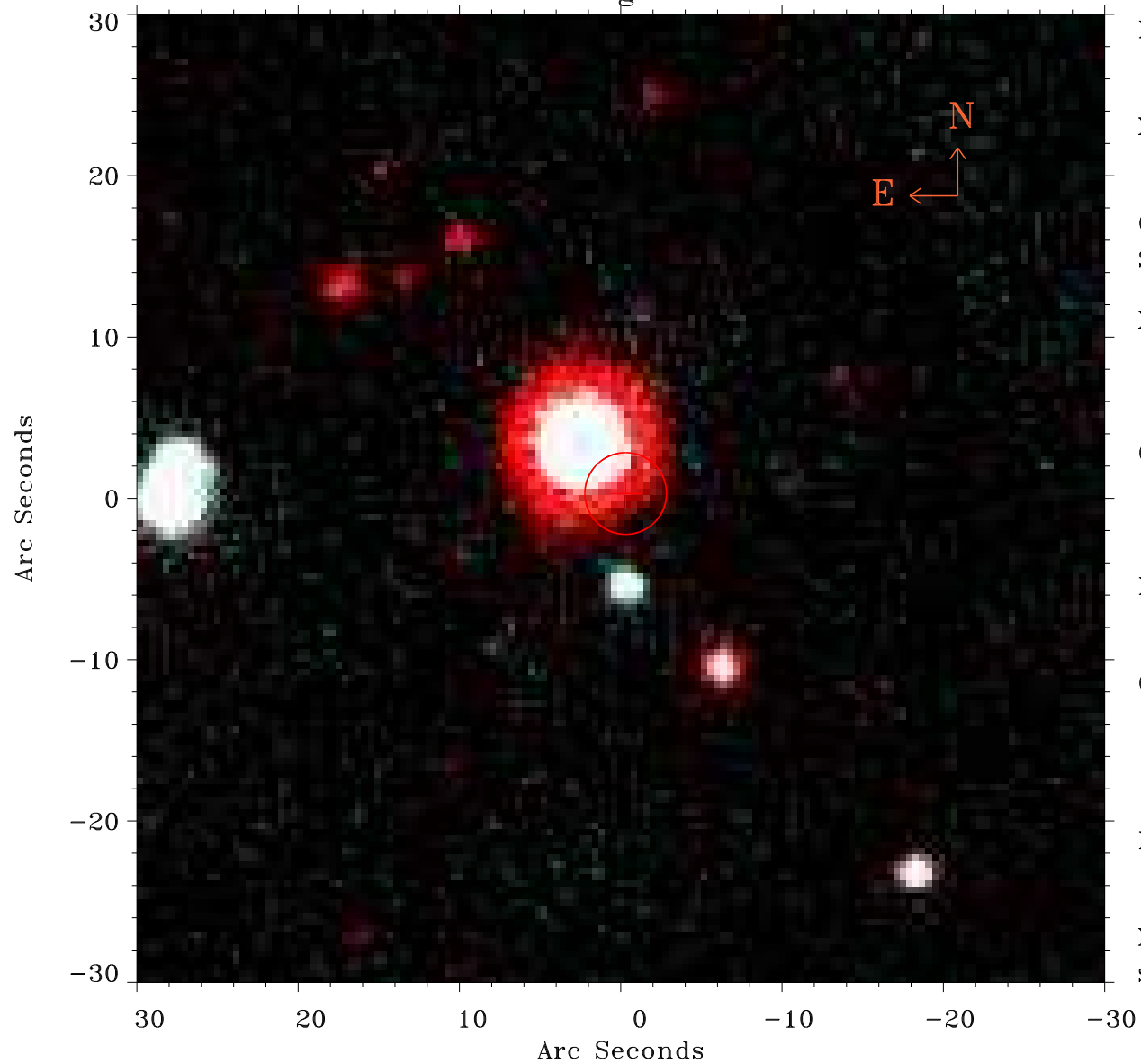


EPIC source finding chart ACDS V10.0



Principal Investigator :

Dr Konrad Dennerl

XMM target name :

C/2015 V2 (Johnson)

OBS ID : 803760431

Source number : 9

X-ray coordinates :

α : 14 14 30.79

δ : -19 58 35.6

Center coordinates :

α : 14 14 30.78

δ : -19 58 35.5

Plate reference :

Origin : PanSTARRS-DR1

Color coding :

z band ●

(z+g)/2 ●

g band ●

Error:

R90 : 2.5 arsec

XMM SSC

Sep 1 08:38:42 2023