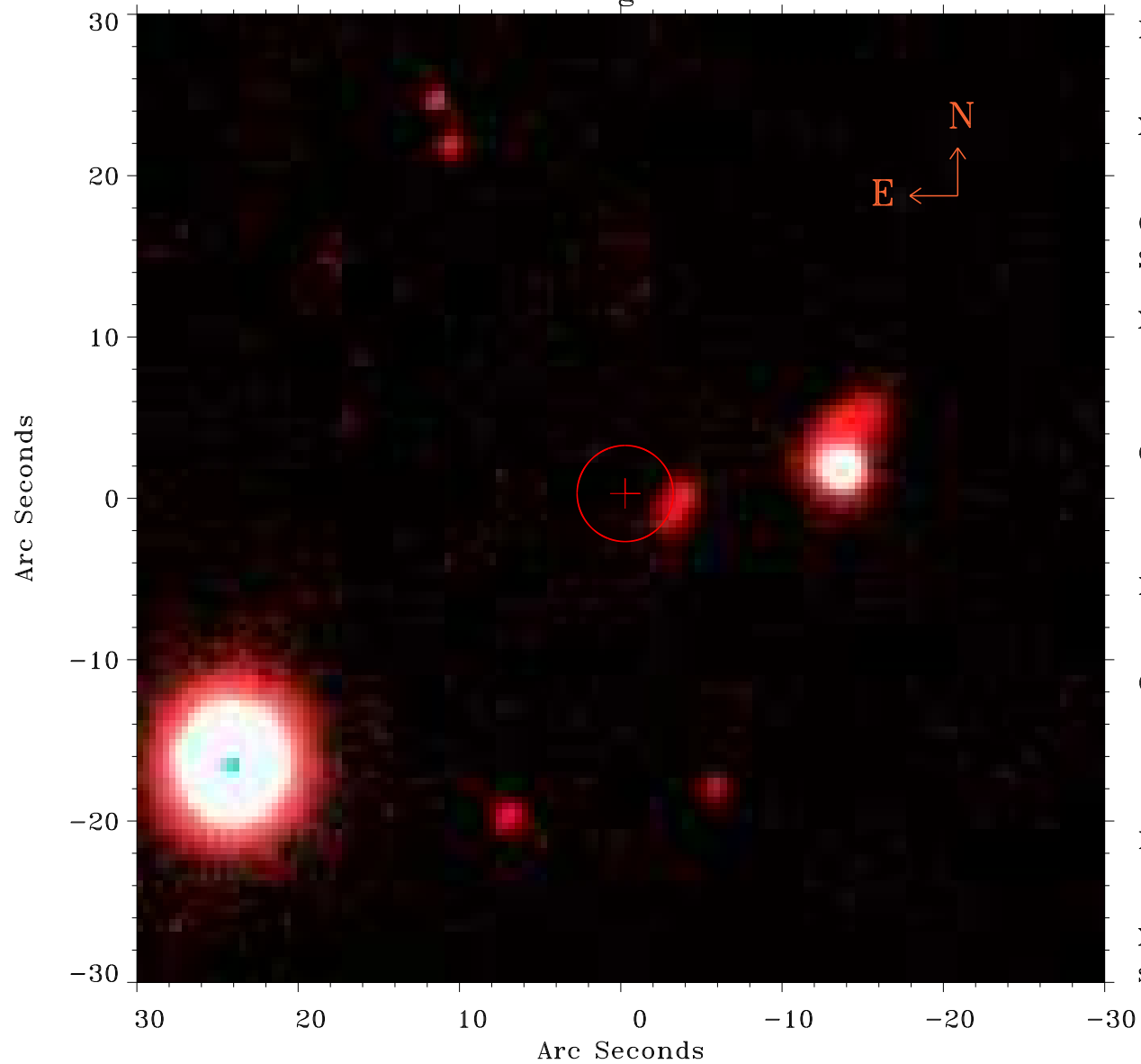


EPIC source finding chart ACDS V10.0



Principal Investigator :

Dr Konrad Dennerl

XMM target name :

C/2015 V2 (Johnson)

OBS ID : 803760433

Source number : 4

X-ray coordinates :

α : 14 13 53.69

δ : -19 46 52.0

Center coordinates :

α : 14 13 53.68

δ : -19 46 51.9

Plate reference :

Origin : PanSTARRS-DR1

Color coding :

z band ●

(z+g)/2 ●

g band ●

Error:

R90 : 3.0 arcsec

XMM SSC

Sep 1 07:08:04 2023