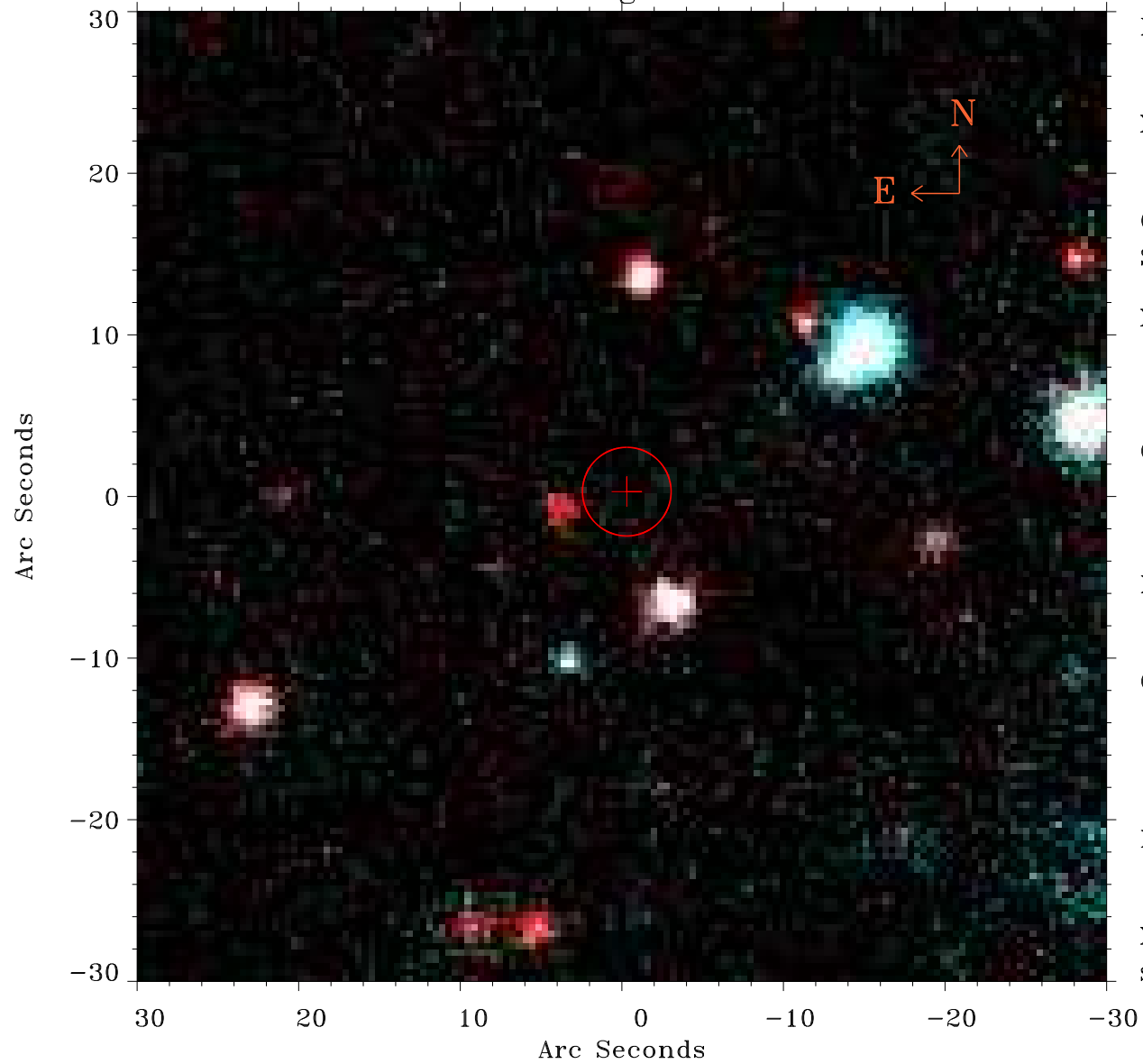


EPIC source finding chart ACDS V10.0



Principal Investigator :
Dr Konrad Dennerl

XMM target name :
C/2015 V2 (Johnson)

OBS ID : 803760433
Source number : 6

X-ray coordinates :
 α : 14 13 35.38
 δ : -19 54 37.8

Center coordinates :
 α : 14 13 35.37
 δ : -19 54 37.7

Plate reference :
Origin : PanSTARRS-DR1

Color coding :
z band ●
(z+g)/2 ●
g band ●

Error:
R90 : 2.7 arcsec

XMM SSC
Sep 1 07:07:33 2023