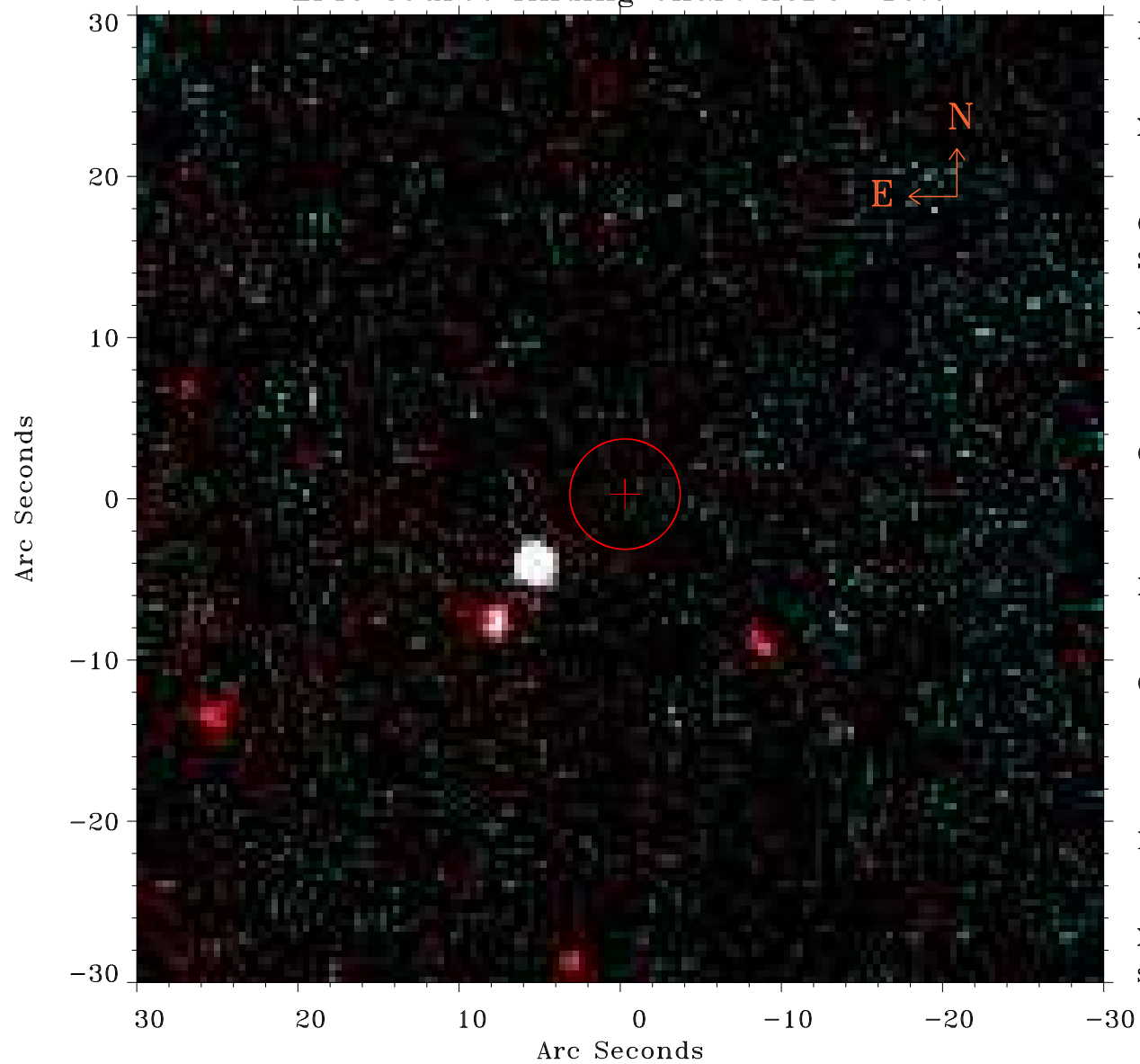


# EPIC source finding chart ACDS V10.0



Principal Investigator :

Dr Konrad Dennerl

XMM target name :

C/2015 V2 (Johnson)

OBS ID : 803760433

Source number : 17

X-ray coordinates :

$\alpha$  : 14 13 51.66

$\delta$  : -19 49 20.6

Center coordinates :

$\alpha$  : 14 13 51.65

$\delta$  : -19 49 20.5

Plate reference :

Origin : PanSTARRS-DR1

Color coding :

z band ●

(z+g)/2 ●

g band ●

Error:

R90 : 3.4 arsec

XMM SSC

Sep 1 07:07:59 2023