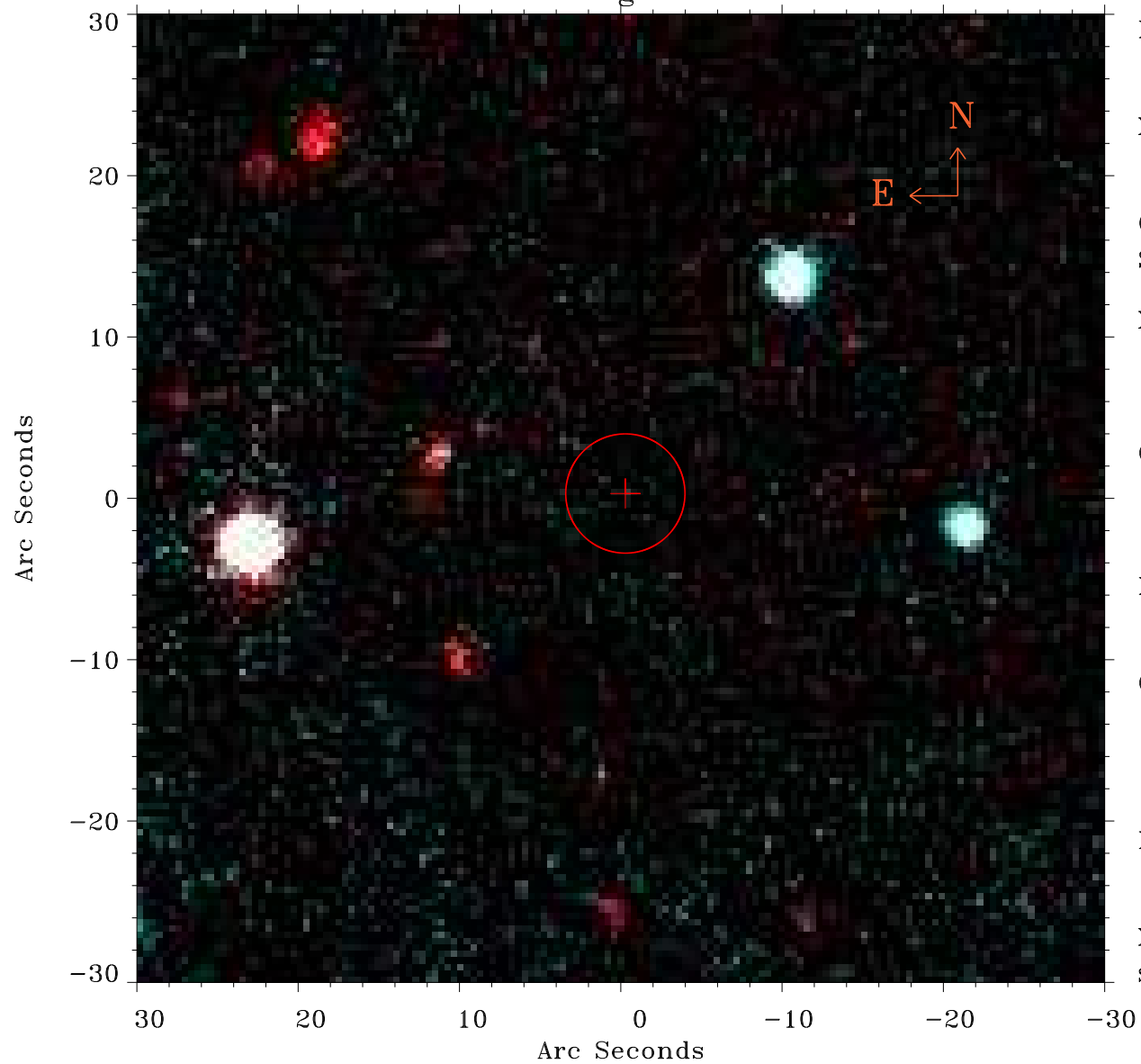


# EPIC source finding chart ACDS V10.0



Principal Investigator :

Dr Konrad Dennerl

XMM target name :

C/2015 V2 (Johnson)

OBS ID : 803760433

Source number : 40

X-ray coordinates :

$\alpha$  : 14 13 31.08

$\delta$  : -20 05 20.1

Center coordinates :

$\alpha$  : 14 13 31.07

$\delta$  : -20 05 20.0

Plate reference :

Origin : PanSTARRS-DR1

Color coding :

z band ●

(z+g)/2 ●

g band ●

Error:

R90 : 3.7 arcsec

XMM SSC

Sep 1 07:07:16 2023