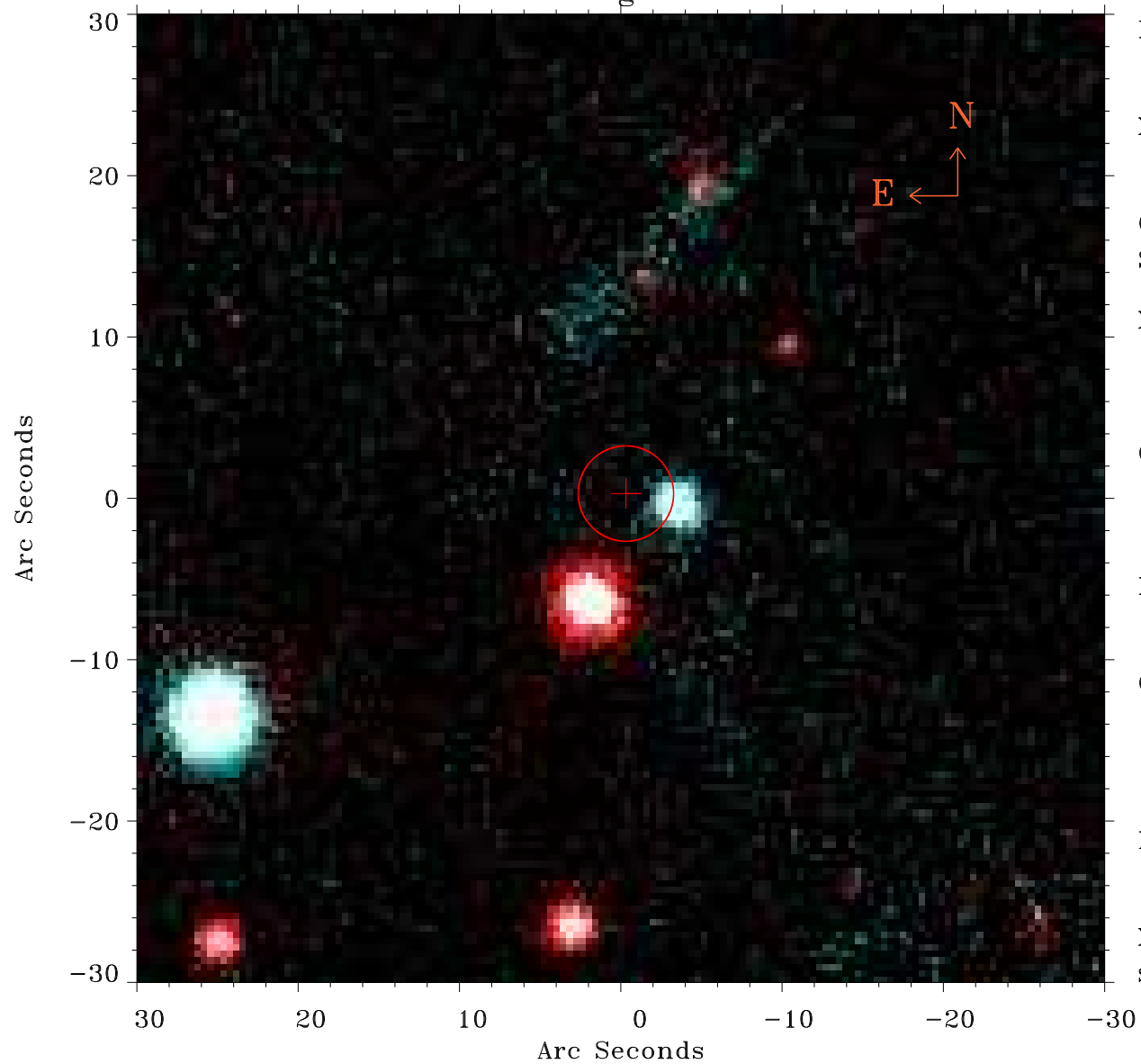


EPIC source finding chart ACDS V10.0



Principal Investigator :

Dr Konrad Dennerl

XMM target name :

C/2015 V2 (Johnson)

OBS ID : 803760433

Source number : 12

X-ray coordinates :

α : 14 14 06.94

δ : -20 10 48.3

Center coordinates :

α : 14 14 06.93

δ : -20 10 48.2

Plate reference :

Origin : PanSTARRS-DR1

Color coding :

z band ●

(z+g)/2 ●

g band ●

Error:

R90 : 2.9 arsec

XMM SSC

Sep 1 07:08:30 2023